



Welcome to Tatura

Entry Presentation



Agenda

- History & footprint
- Statistics
- Capability & capacity
- Site compliance
- Questions
- Site tour





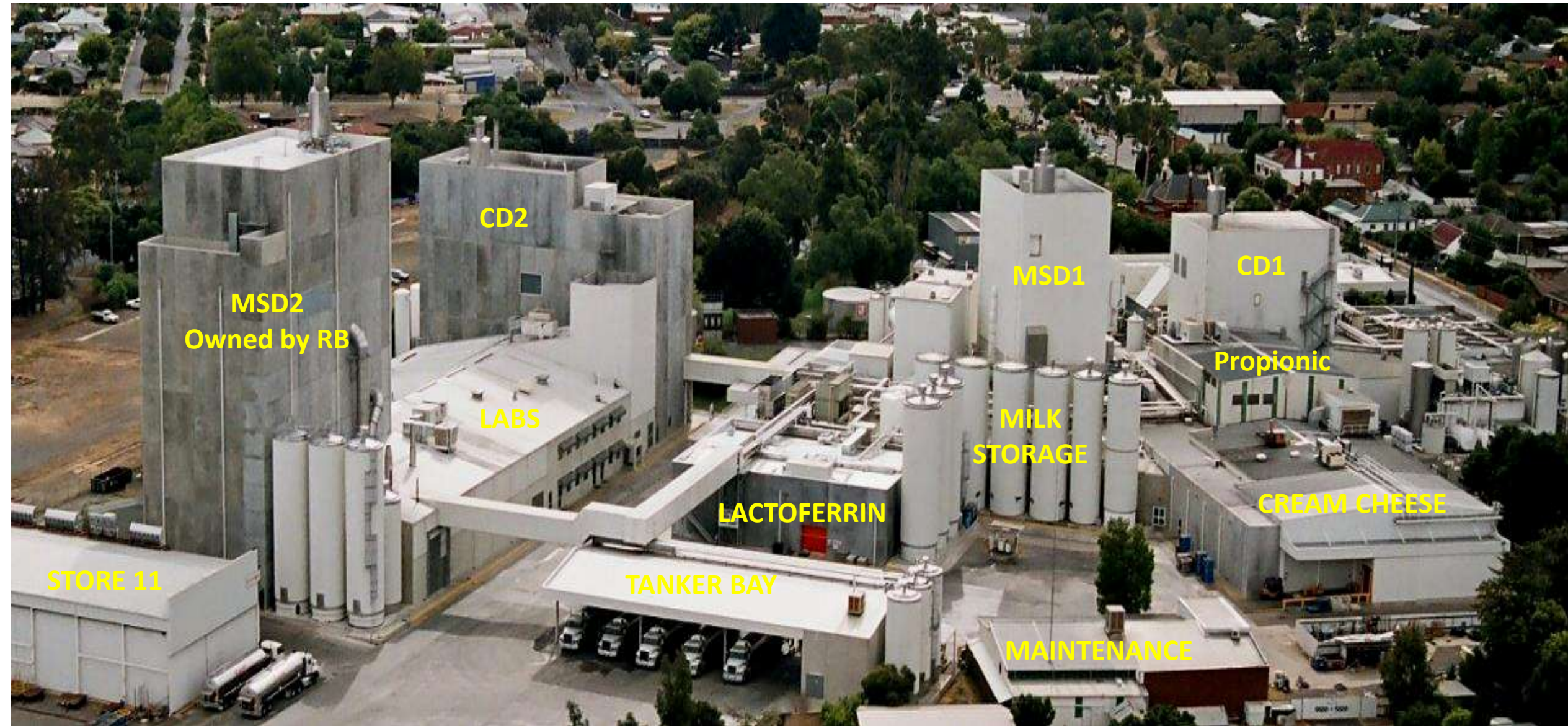
Tatura established: 1907

(2012 fully merged with Bega)

Tatura Footprint



Tatura Aerial



Tatura Production Statistics – FY25 Budget

Volumes (FY25 Budget)	Tonne
Butter (packing – Koroit MF)	220
Cream Cheese	30,105
High Fat	4,543
Lactoferrin	12
Infant Formula (MSD1)	3,613
Other Powders (CD2)	18,338
NPD – Propionic Acid	800
Grand Total	57,631

Facts & Figures (FY25 Budget)	Million Litres
Total Milk	222.9
Total Cream	9.6
Grand Total	232.5



Tatura Labour Statistics – FY25 Budget



FY25 EMPLOYEE NUMBERS (Total 240 in Operations)

Production Employees	125
Warehouse Employees	14
Maintenance Employees	21
Casual Employees	75
Operational & Technical Staff	31
Corporate Staff based out of Tatura	49

		Jul-24	Aug-24	Sep-24	Oct-24	Nov-24	Dec-24	Jan-25	Feb-25	Mar-25	Apr-25	May-25	Jun-25
Butter Minipat	Shift Structure	24x5	24x5	24x5	24x5	24x5	24x5	24x5	24x5	24x5	24x5	24x5	24x5
Operators	12 hr shifts	1	1	1	1	1	1	1	1	1	1	1	1
CC Base	Shift Structure	24x7	24x7	24x7	24x7	24x7	24x7	24x7	24x7	24x7	24x7	24x7	24x7
Operators	4O4O	5	5	5	5	5	5	5	5	5	5	5	5
CC Bulk	Shift Structure	24x7	24x7	24x7	24x7	24x7	24x7	24x7	24x7	24x7	24x7	24x7	24x7
Operators	4O4O	3	3	3	3	3	3	3	3	3	3	3	3
CC Chubes	Shift Structure	24x5	24x5	24x5	24x5	24x5	24x5	24x5	24x5	24x5	24x5	24x5	24x5
Operators	12 hr shifts	3	3	3	3	3	3	3	3	3	3	3	3
CC 2kg	Shift Structure	24x7	24x7	24x7	24x7	24x7	24x7	24x7	24x7	24x7	24x7	24x7	24x7
Operators	4O4O	2	2	2	2	2	2	2	2	2	2	2	2
High Fat Packing	Shift Structure			24x7	24x7	24x7	24x7						
Operators	12 hr shifts	3	3	3	3	3	3	3	3	3	3	3	3
Lactoferrin Process	Shift Structure	24x7	24x7	24x7	24x7	24x7	24x7	24x7	24x7	24x7	24x7	24x7	24x7
Operators	4O4O	1.5	1.5	1.5	1.5	1.5	1.5	1.5	1.5	1.5	1.5	1.5	1.5
Lactoferrin Milling	Shift Structure	8x2	8x2	8x2	8x2	8x2	8x2	8x2	8x2	8x2	8x2	8x2	8x2
Operators	8 hr shifts	2	2	2	2	2	2	2	2	2	2	2	2
CD2	Shift Structure	24x5	24x5	24x7	24x7	24x7	24x7	24x5	24x5	24x5	24x5	24x5	24x5
Operators	12 hr shifts	4	4	5	5	5	5	4	4	4	4	4	4
MSD1	Shift Structure	24x5	24x5	24x5	24x5	24x5	24x5	24x5	24x5	24x5	24x5	24x5	24x5
Operators	12 hr shifts	7	7	7	7	7	7	7	7	7	7	7	7
Store 11	Shift Structure	4x10	4x10	4x10	4x10	4x10	4x10	4x10	4x10	4x10	4x10	4x10	4x10
Operators	10 hr days	1	1	1	1	1	1	1	1	1	1	1	1
Seps, City Milk, Tanker	Shift Structure	24x7	24x7	24x7	24x7	24x7	24x7	24x7	24x7	24x7	24x7	24x7	24x7
Operators	4O4O	4.5	4.5	4.5	4.5	4.5	4.5	4.5	4.5	4.5	4.5	4.5	4.5
Buff, 4Eff & UF, Prop, retentate	Shift Structure	24x7	24x7	24x7	24x7	24x7	24x7	24x7	24x7	24x7	24x7	24x7	24x7
Operators	4O4O	3	3	3	3	3	3	3	3	3	3	3	3
Lactose Slurry	Shift Structure	24x3	24x3	24x3	24x3	24x3	24x3	24x3	24x3	24x3	24x3	24x3	24x3
Operators	12 hr shifts	2	2	2	2	2	2	2	2	2	2	2	2
Supervisors	Shift Structure	24x7	24x7	24x7	24x7	24x7	24x7	24x7	24x7	24x7	24x7	24x7	24x7
Operators	4O4O	2	2	2	2	2	2	2	2	2	2	2	2

* CD2 16 week season Sep - Dec

* Cheese to run 7 days

* High Fat Based on volume

Tatura Capability and Capacity

Site Capabilities	Capacity Current	FY2025 Budget Volume	Details
Cream Cheese	36 kt	30 kt	Bulk – 10kg and 20kg Chubs – 250g, 500g, 1kg 2kg – 2 fillers Drums – 200 kg
High Fat Cream Cheese	10 kt	3.9 kt	Bulk – 20kg bag in box
Butter	0.3 kt	0.2 kt	7-gram mini pat line only (Tatura branded)
CD1 – GEA Niro Dryer built in 1987	4 to 10 kt	0 kt	Currently idle – 25 kg bag format. Previously used for MPC. Could be used for non dairy opportunities
CD2 – GEA Niro Dryer built in 1997	32 kt	18.4 kt	25kg bags & 600 kg bulk bags
MSD1 – GEA Niro dryer built in 1993	11 kt	3.6 kt	Infant Formula dryer 25kg and 600 kg bulk bags
LACTOFERRIN	17 t	12 t	10 kg bag in box – freeze dried

Questions






Site Compliance



Housekeeping

Welcome to site

- Toilets and bathrooms
- No smoking site
- Evacuation assembly areas 



SAFETY & EMERGENCY RESPONSE

- **Please stay with your host at all times.**
- **At the sound of an alarm (Beep Beep)**
 - Await instruction from your host or warden, prepare to evacuate.
- **If the (Whoop Whoop) tone sounds**
 - Follow your host or warden instructions to evacuate.
- **If your area is required to evacuate:**
 - Stay Calm and leave the area quickly when instructed.
 - Assist anyone that may need help if it is safe to do so.
 - Proceed to the nearest safest Emergency Assembly Point.
 - Remain at the Emergency Assembly Point until told to leave by your warden.
- **Please report all incidents, hazards or improvement ideas.**
- **Your feedback is welcome.**



LIFE SAVING RULES



MACHINE SAFETY

- I always follow site Lock Out Tag Out (LOTO) procedures when accessing machinery.



PEDESTRIANS

- I always maintain three (3) metres distance from an operating vehicle (forklift, truck, ride-on material handling equipment, stock picker) unless separated by a risk assessed barrier.
- I always stay clear of a suspended load.



FORKLIFT DRIVERS

- I always maintain three (3) metres distance from a pedestrian unless separated by a risk assessed barrier.
- I always ensure I only block stack materials above two (2) metres that have written site management approval.
- I always immediately report all forklift impacts to racking.



WORKING AT HEIGHT

- I always have a Managing Risks from Falls permit when not on a fixed platform and when working above two (2) metres.



CONFINED SPACE

- I always have a valid confined space permit which I comply with when entering a confined space.



ELECTRICAL SAFETY

- I always have a valid licence to perform electrical work.
- I always test and confirm 'zero potential voltage' before touching electrical work.

Tatura Site Visitor Tour Protocols

In the interest of your safety, the safety of our employees and the integrity of our products, we require you to adhere to the following requirements while in the manufacturing facility:

- ***Pacemaker function can be impacted through magnets across the plant. If you have one this must be raised before leaving the office.***
- Fully enclosed shoes must be worn.
- Long Sleeved shirt and pants must be worn at all times.
- All high visibility, and protective clothing must be worn at all times.
- Hearing protection must be worn as required.
- All jewellery must be removed.
- Mobile phones are not permitted in the plant.
- No photos or footage is to be taken. Your site contact can take pictures if required.
- When on the tour please stay with your tour guide at all times within the group.
- Stay within the designated walking zones (yellow lines) and adhere to fork segregation of a minimum of 3m clearance.
- Remember 3 points contact when using stairs (hold the handrail)
- Please adhere to high levels of GMP including handwashing and sanitation and correct wearing of hairnets, beard masks and redline uniforms.
- If you have recently had or are currently suffering from any illness, you will not be able to attend the tour and may be requested to leave site.

QUALITY CERTIFICATIONS



BRC (Grade AA rating)



ISO 9001, accredited since 1996



AQIS/DFSV registered for the manufacture and export of dairy products



HACCP based quality system (Dairyfood Safety)



Tatura Quality Milk Program – accreditation for dairy farmers implementation 2001



NASAA approved for organics. National association for sustainable agriculture Australia



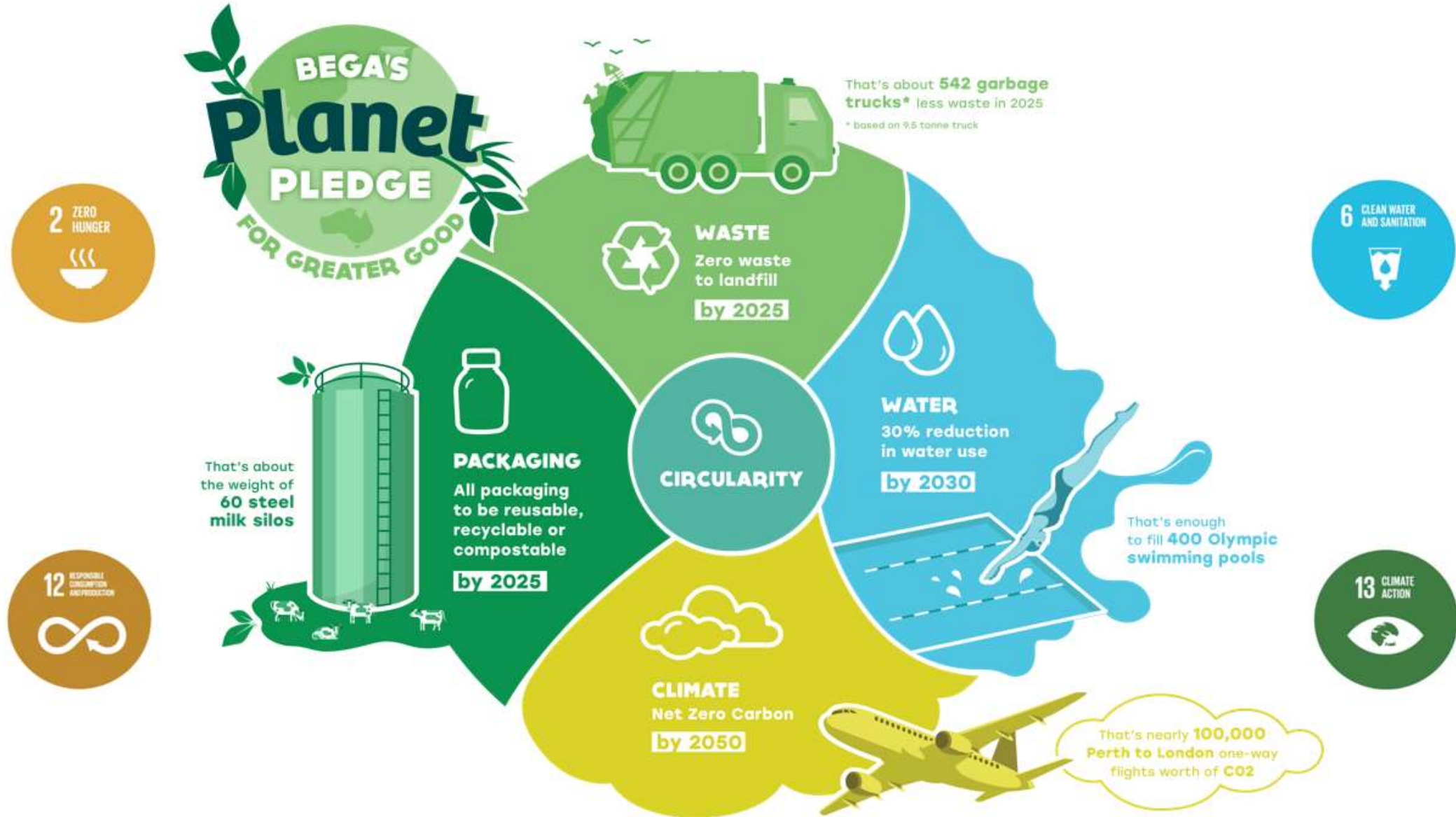
Halal/Kosher registered



CNCA accreditation



Environment



Questions

