



Weekly pasture growth and evapotranspiration

utas.edu.au/tia

Author: Leah Davies & Jacob Lightman

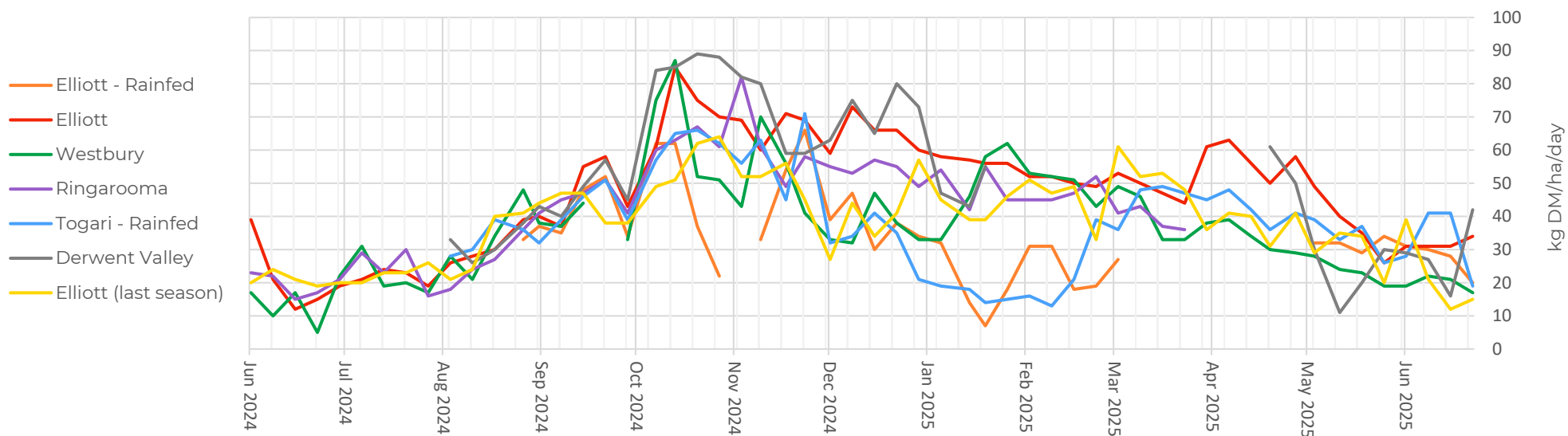
Regional pasture growth rates

Region	Pasture growth rate (kg DM/ha/day) - Satellite	
	Irrigated	Dryland
Togari	19	
Elliott	34	20
Westbury	17	
Ringarooma		
Derwent Valley	42	

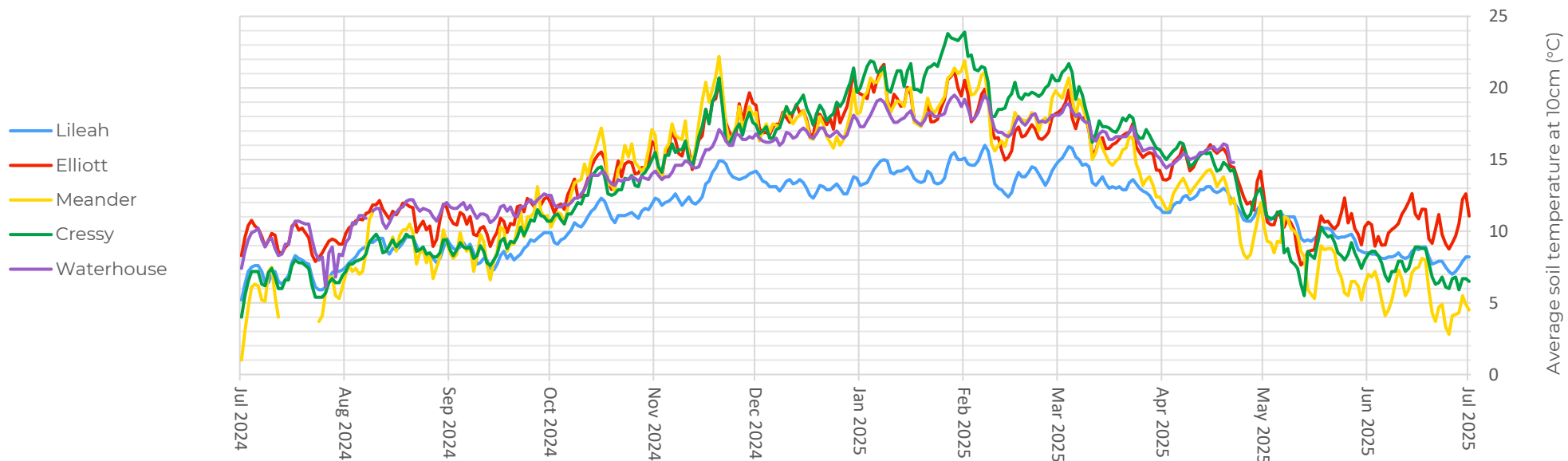
Pasture growth rates vary between farms for many reasons, including climate, soil type, nutrient availability and management. Satellite pasture growth rates are sourced from Pasture.io (<https://pasture.io/>).

Leaf emergence rate at Elliott				
Leaf emergence rate (days per leaf)		Days to 2 leaf stage	Days to 2.5 leaf stage	Days to 3 leaf stage
Irrigated	14	28	35	42

Irrigated pasture growth rates — satellite



Soil temperature



Weekly evapotranspiration and rainfall

Wednesday, 2 July to Tuesday, 8 July 2025

Location	ET _o ¹ (mm)	Rainfall (mm)	Rainfall (month-to-date; mm)	Soil temp (°C) 9:00 a.m. @ 10 cm
Pegarah (KI)	9.1	0.6	0.6	7.0
Lileah	5.1	0.8	0.8	7.6
Elliott	4.7	0.2	0.2	10.6
Meander	3.2			4.3
Cressy	3.8	1.0	1.2	6.5
Ringarooma	8.4	0.6	1.4	7.6
Waterhouse				

Data for this table is collected from the [UNITAS Weathermation weather stations](#) at Lileah, Elliott (Tasmanian Dairy Research Facility), Meander (Clear Springs) and Waterhouse (Forester Lodge). These weather stations have been installed on [Smarter Irrigation for Profit II](#) optimised irrigation farms. Data for Pegarah (King Island) and Ringarooma is sourced from the Ag Logic Weather Station and Probe Network (<https://www.aglogic.com.au/>).

¹ET_o is the reference evapotranspiration, an estimation of the evapotranspiration from the “reference surface” — grass with an assumed height of 12 cm.

Note: The weather station in Meander was damaged recently and the rainfall data is currently unreliable, so we've chosen to omit it until it can be repaired. We've also identified an issue with the air temperature thermometer at Lileah, which is resulting in the underreporting of the ET_o. As such, we're estimating this value until we can address the issue.

Tuesday, 1 July to Monday, 7 July 2025

Location	ET _o ¹ (mm)	Rainfall (mm)	Rainfall (month-to-date; mm)	Soil temp (°C) 9:00 a.m. @ 10 cm
Ouse	1.8	0.4	0.4	

Climate data for Ouse is collated from www.bom.gov.au. It is displayed in a different table because the date that data is available is different to the UNITAS Weathermation stations.

* Soil temperature information for Ouse is currently unavailable.

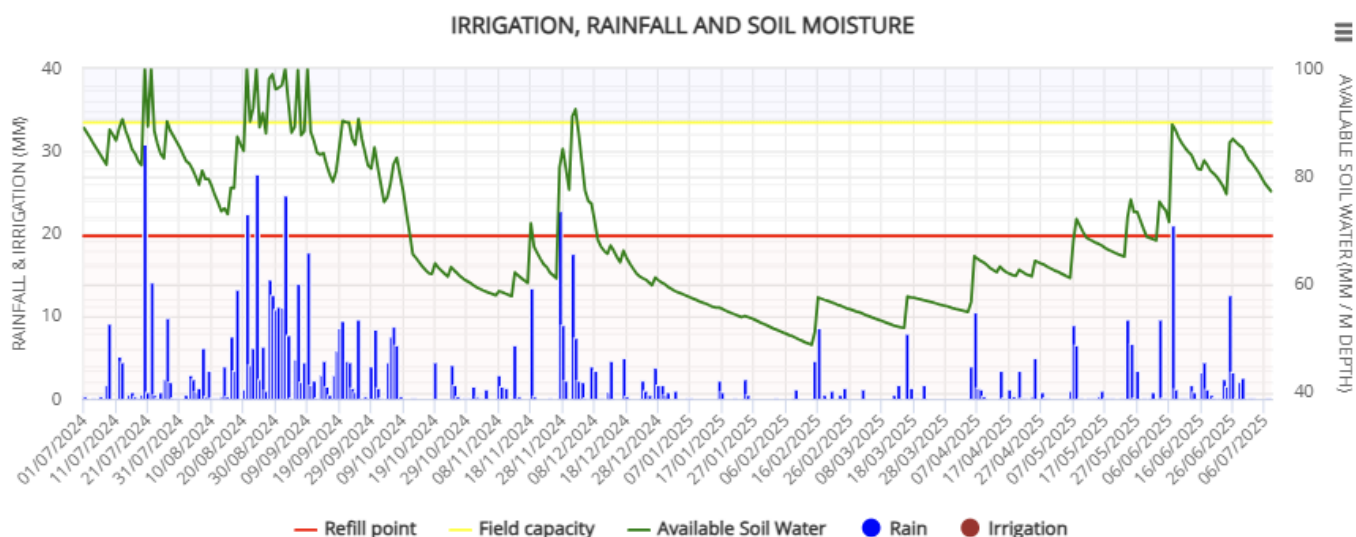
Soil moisture budgets

The soil moisture budgets below have been produced using IrriPasture (<https://irripasture.com/>). This is a free budgeting tool that can help you make decisions about your irrigation scheduling. This report has budgets for Bushy Park/Ouse, Scottsdale, Meander, Sheffield, Elliott and Lileah. The graphs show the available soil moisture (green line). The aim is to keep this green line between the red line (refill point) and the yellow line (field capacity). The distance between the yellow and red line is how much Readily Available Water (RAW) the soil holds. The amount of RAW your soil can hold will depend on your soil type. As a guide, the amount of RAW that is held in the top 30 cm for common soil types is:

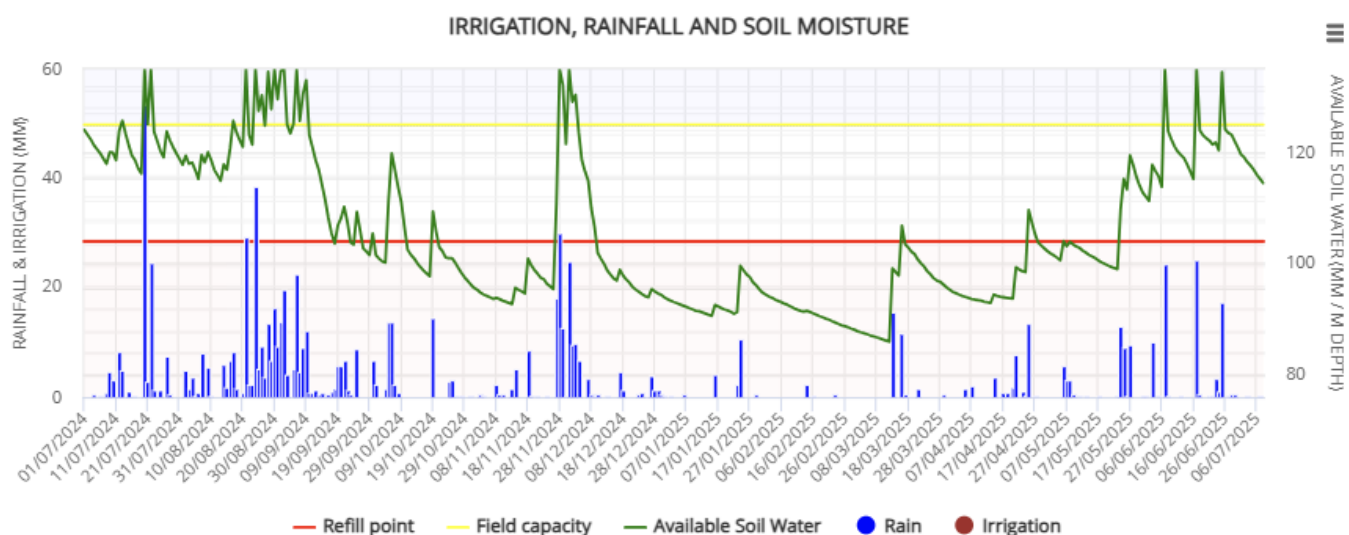
- Sand = 9 mm
- Loamy sand = 15 mm
- Sandy loam = 21 mm
- Loam = 27 mm
- Clay = 15 mm
- Clay loam = 24 mm

The soil moisture budgets in this report have used an 'average' RAW value of 21 mm. If your soil holds less soil moisture than this, you will need to irrigate earlier than the water budget indicates. If your soil holds more moisture than this, you probably don't need to irrigate as soon. **THESE SOIL MOISTURE BUDGETS ARE A GUIDE ONLY.** Please do a physical check of the soil moisture on your farm to help make the decision when to start irrigating.

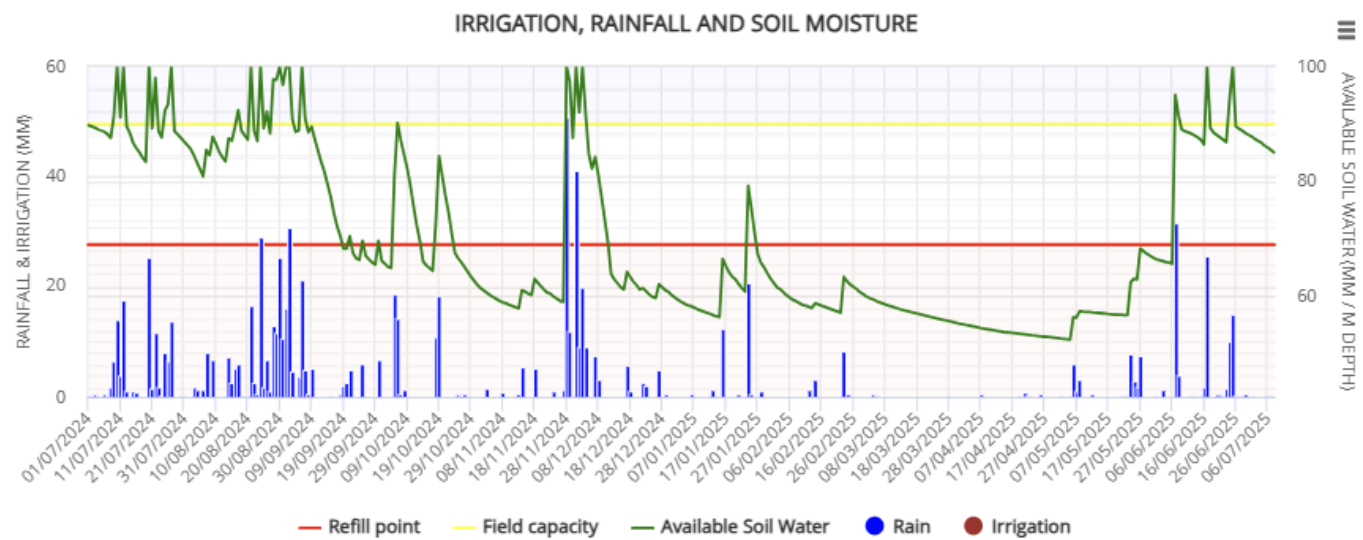
Smithton



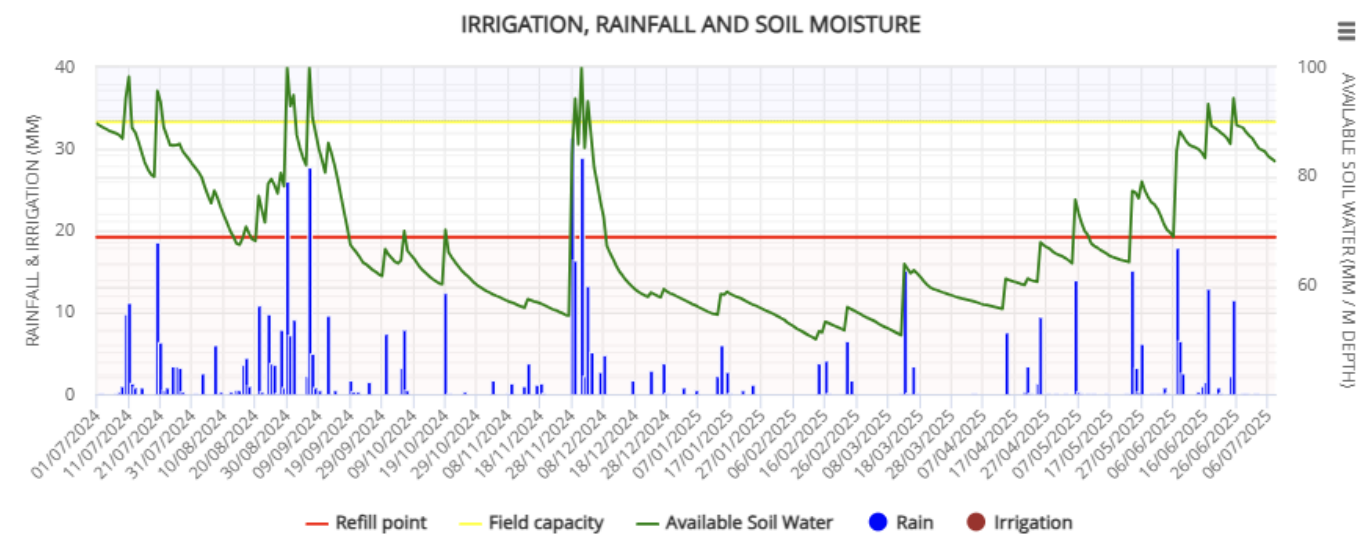
Wynyard



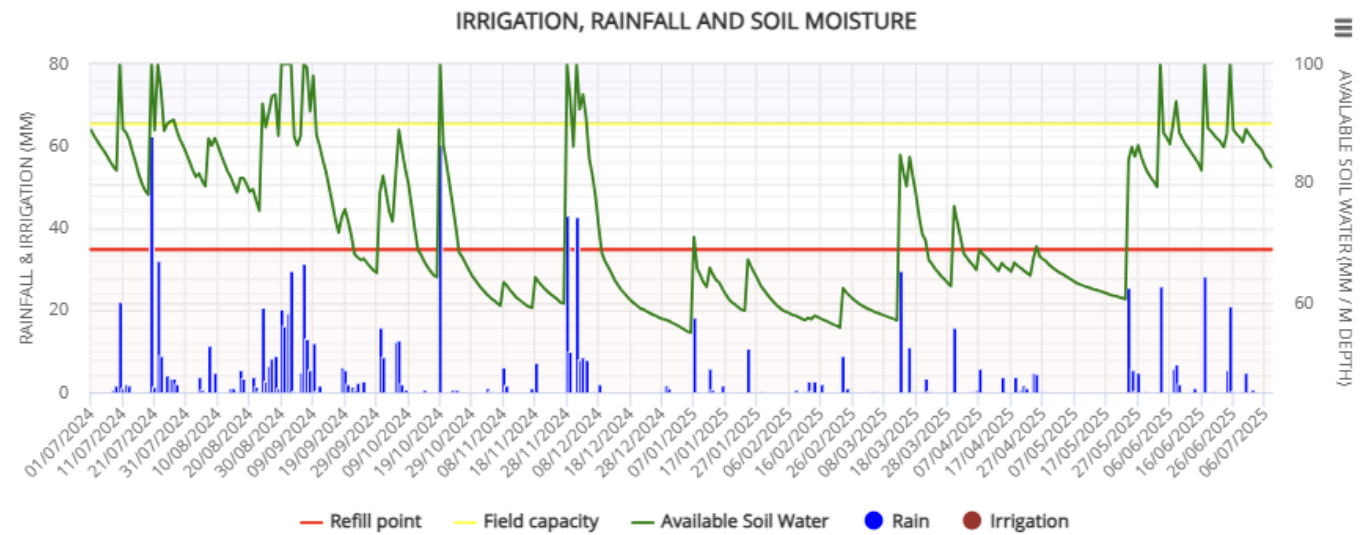
Sheffield



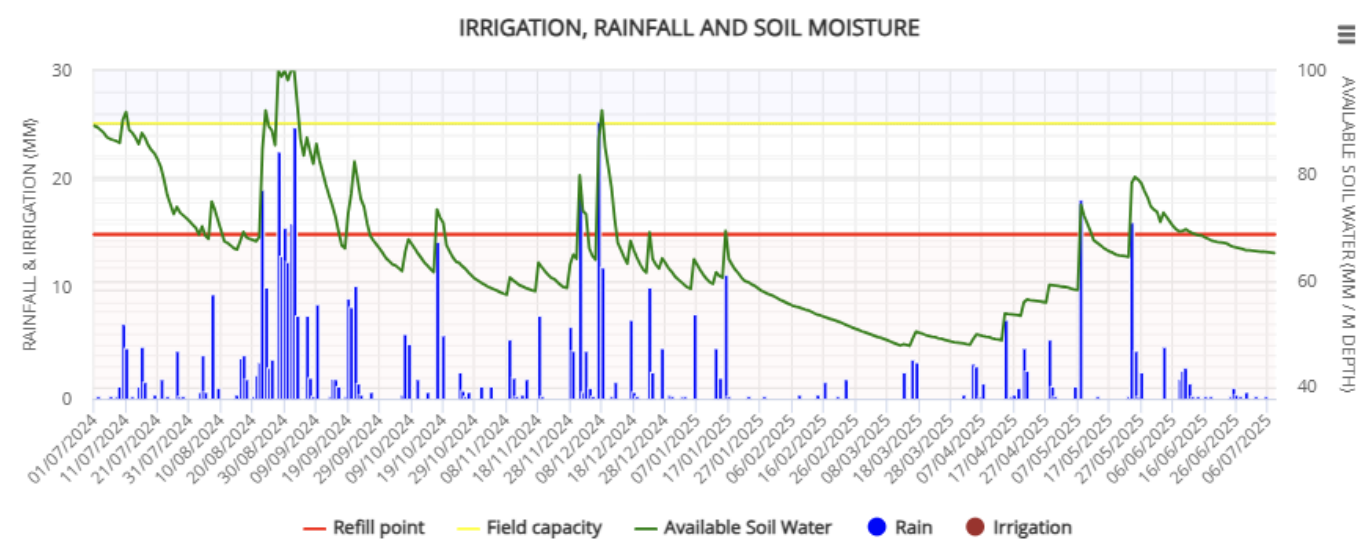
Cressy



Scottsdale



Ouse



7-day forecasts

The following tables present the 7-day evapotranspiration, rainfall, temperature, humidity, and forecast for key dairy regions in Tasmania. The data is sourced from the Weatherwise Watering Swan Systems (<https://www.swansystems.com.au/irrigation-harnessing-power-of-data/>)

Elliott

Date	ETo* mm	Chance of Rain %	Rain Range mm	Rain Estimate mm	Temp Range °C	Avg R. Humidity %	Avg Wind Speed km/hr
Wed, 09-Jul	0.7	100	10-15	13	2-11	90	17
Thu, 10-Jul	0.8	90	5-9	7	4-11	88	17
Fri, 11-Jul	1.3	75	1-3	2.3	2-13	83	18
Sat, 12-Jul	1	80	2-5	4.1	3-13	89	13
Sun, 13-Jul	1	95	10-15	12.7	5-13	89	20
Mon, 14-Jul	0.9	75	2-8	6.4	1-10	88	11
Tue, 15-Jul	1	75	2-6	5	2-11	84	15
TOTAL	6.7			50.5			

Smithton

Date	ETo* mm	Chance of Rain %	Rain Range mm	Rain Estimate mm	Temp Range °C	Avg R. Humidity %	Avg Wind Speed km/hr
Wed, 09-Jul	1	100	9-15	11.1	3-13	91	22
Thu, 10-Jul	0.9	90	4-7	6	4-12	91	20
Fri, 11-Jul	1.3	85	3-5	4.1	3-14	87	20
Sat, 12-Jul	1.1	85	3-7	5.6	2-15	93	16
Sun, 13-Jul	1.2	95	9-15	11.6	6-14	87	26
Mon, 14-Jul	1	80	4-10	7.1	2-12	90	13
Tue, 15-Jul	1.1	80	4-8	6.3	2-12	85	17
TOTAL	7.6			51.8			

Meander

Date	ETo* mm	Chance of Rain %	Rain Range mm	Rain Estimate mm	Temp Range °C	Avg R. Humidity %	Avg Wind Speed km/hr
Wed, 09-Jul	0.5	100	10-20	14.5	1-9	90	10
Thu, 10-Jul	0.8	95	8-15	10.3	3-10	84	11
Fri, 11-Jul	1.1	65	1-2	2	0-11	82	13
Sat, 12-Jul	0.9	65	1-3	2.2	1-11	87	10
Sun, 13-Jul	1.1	95	15-20	15.2	3-12	87	18
Mon, 14-Jul	0.8	70	2-6	4.9	0-9	83	10
Tue, 15-Jul	1	75	2-6	4.9	1-10	80	11
TOTAL	6.2			54			

Sheffield

Date	ETo* mm	Chance of Rain %	Rain Range mm	Rain Estimate mm	Temp Range °C	Avg R. Humidity %	Avg Wind Speed km/hr
Wed, 09-Jul	0.5	100	10-20	13.9	2-10	92	11
Thu, 10-Jul	0.7	95	8-15	9.8	5-11	86	11
Fri, 11-Jul	1.1	65	1-2	1.8	2-12	83	14
Sat, 12-Jul	0.8	70	1-4	2.6	2-12	88	10
Sun, 13-Jul	0.9	95	10-15	12.4	5-12	88	18
Mon, 14-Jul	0.8	75	2-7	5.4	2-9	85	10
Tue, 15-Jul	0.9	70	2-6	4.5	2-10	83	12
TOTAL	5.7			50.4			

Scottsdale

Date	ETo* mm	Chance of Rain %	Rain Range mm	Rain Estimate mm	Temp Range °C	Avg R. Humidity %	Avg Wind Speed km/hr
Wed, 09-Jul	0.6	95	8-15	9.8	4-10	91	11
Thu, 10-Jul	0.6	95	10-20	13.1	5-11	90	10
Fri, 11-Jul	1.1	45	0-1	1	2-12	82	13
Sat, 12-Jul	0.9	70	1-4	3	2-12	86	10
Sun, 13-Jul	0.8	95	15-20	15.9	6-12	88	20
Mon, 14-Jul	0.8	70	2-8	6.3	1-10	85	10
Tue, 15-Jul	0.9	70	1-5	4.5	3-11	82	11
TOTAL	5.7			53.6			

Ouse

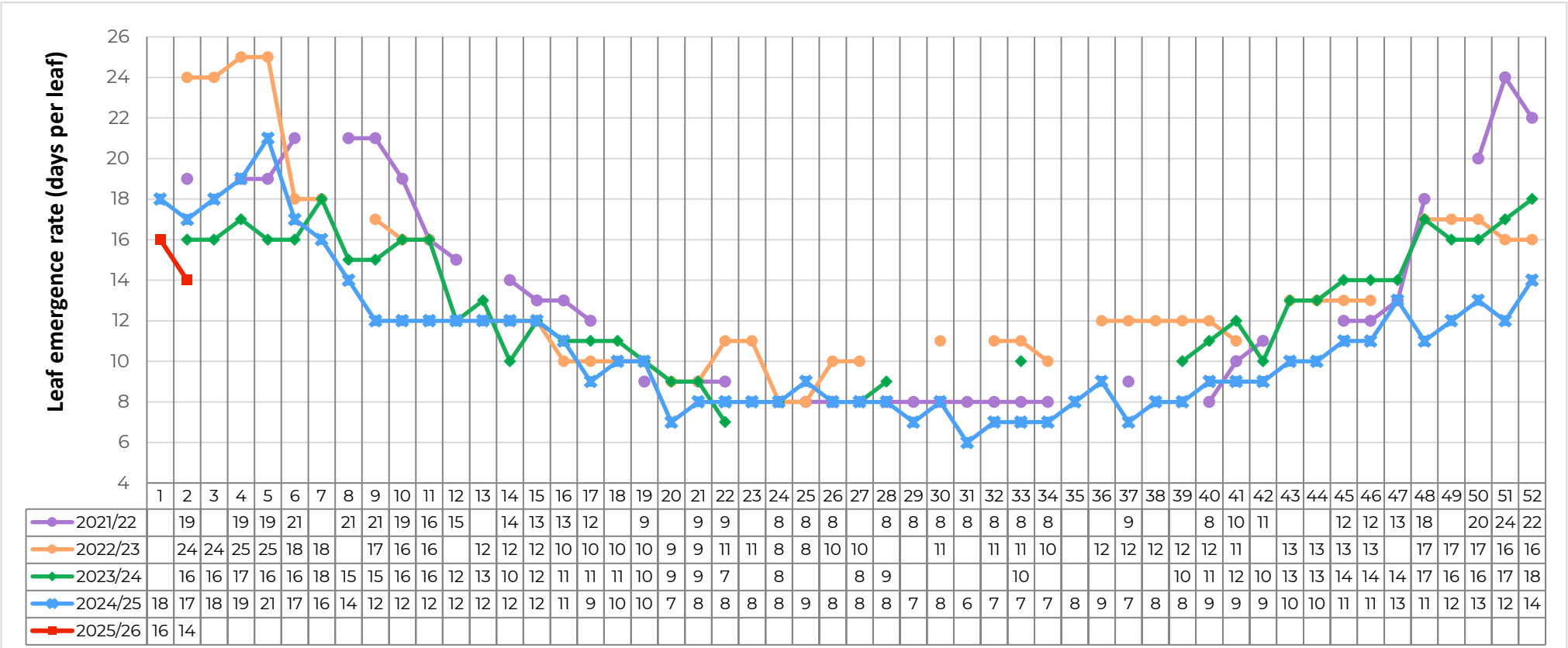
Date	ETo* mm	Chance of Rain %	Rain Range mm	Rain Estimate mm	Temp Range °C	Avg R. Humidity %	Avg Wind Speed km/hr
Wed, 09-Jul	0.8	50	0-1	1	1-11	86	11
Thu, 10-Jul	0.7	70	1-4	2.8	0-10	88	10
Fri, 11-Jul	1	85	3-6	4.2	0-11	87	15
Sat, 12-Jul	0.9	55	0-2	1.8	0-12	89	12
Sun, 13-Jul	1.4	90	10-20	13.3	3-14	83	18
Mon, 14-Jul	0.8	65	1-4	3	0-9	88	10
Tue, 15-Jul	0.7	75	2-7	5.2	-2-9	88	12
TOTAL	6.3			31.3			

King Island

Date	ETo* mm	Chance of Rain %	Rain Range mm	Rain Estimate mm	Temp Range °C	Avg R. Humidity %	Avg Wind Speed km/hr
Wed, 09-Jul	1.4	100	10-15	12.1	5-13	86	25
Thu, 10-Jul	1.3	95	5-10	7.9	4-12	85	23
Fri, 11-Jul	1.6	90	2-5	4.1	6-15	85	23
Sat, 12-Jul	1.2	85	3-6	5.2	7-15	87	19
Sun, 13-Jul	1.6	90	8-15	10.6	8-15	81	28
Mon, 14-Jul	0.9	85	6-15	10.8	4-11	87	13
Tue, 15-Jul	1.4	85	5-10	7.5	4-13	81	20
TOTAL	9.4			58.2			

Leaf emergence rate

This graph shows the leaf emergence rate in days per leaf for the past three seasons compared to the current season. The numbers directly below the graph (1-52) represent the weeks in the financial year, with week 1 being the first week in July and week 52 being the last week in June.



For more information please contact: Jacob.Lightman@utas.edu.au or visit utas.edu.au/tia

DISCLAIMER: While the Tasmanian Institute of Agriculture (TIA) takes reasonable steps to ensure that the information on its fact sheets is correct, it provides no warranty or guarantee that information is accurate, complete or up-to-date. TIA will not be liable for any loss, damage, cost or expense incurred or arising by reason of any person using or relying on the information contained in this publication. No person should act on the basis of the contents of this publication without first obtaining specific, independent, professional advice. TIA and contributors to this Fact Sheet may identify products by proprietary or trade names to help readers identify particular types of products. We do not endorse or recommend the products of any manufacturer referred to. Other products may perform as well or better than the products of the manufacturer referred to.