

Victoria Milk Production

24/25 by Region

(Million Litres)



		Eastern			Northern			Western			Victoria		
		23/24	24/25	Var %	23/24	24/25	Var %	23/24	24/25	Var %	23/24	24/25	Var %
July		114.8	118.2	3.0%	108.5	114.2	5.2%	158.0	158.5	0.3%	381.3	390.9	2.5%
	YTD	114.8	118.2	3.0%	108.5	114.2	5.2%	158.0	158.5	0.3%	381.3	390.9	2.5%
August		151.3	159.5	5.4%	121.2	130.0	7.2%	173.4	172.7	-0.4%	445.9	462.2	3.6%
	YTD	266.1	277.7	4.4%	229.7	244.1	6.3%	331.4	331.2	-0.1%	827.3	853.0	3.1%
September		192.6	203.4	5.6%	145.7	152.3	4.5%	186.8	179.7	-3.8%	525.1	535.4	2.0%
	YTD	458.8	481.2	4.9%	375.5	396.5	5.6%	518.2	510.8	-1.4%	1,352.4	1,388.5	2.7%
October		218.4	231.8	6.2%	160.7	166.1	3.3%	203.7	195.9	-3.8%	582.9	593.8	1.9%
	YTD	677.2	713.0	5.3%	536.2	562.6	4.9%	721.9	706.7	-2.1%	1,935.3	1,982.3	2.4%
November		211.1	218.0	3.2%	152.0	155.9	2.5%	190.7	181.1	-5.0%	553.9	555.0	0.2%
	YTD	888.3	931.0	4.8%	688.2	718.4	4.4%	912.6	887.9	-2.7%	2,489.2	2,537.3	1.9%
December		189.7	194.9	2.7%	145.0	146.1	0.8%	170.1	162.8	-4.3%	504.8	503.8	-0.2%
	YTD	1,078.0	1,125.9	4.4%	833.2	864.5	3.8%	1,082.7	1,050.6	-3.0%	2,994.0	3,041.0	1.6%
January		168.6	162.3	-3.8%	130.1	133.2	2.4%	148.7	136.0	-8.6%	447.4	431.5	-3.6%
	YTD	1,246.7	1,288.2	3.3%	963.3	997.7	3.6%	1,231.4	1,186.6	-3.6%	3,441.4	3,472.5	0.9%
February		135.4	125.6	-7.2%	105.1	104.8	-0.3%	116.4	105.5	-9.4%	356.9	335.9	-5.9%
	YTD	1,382.0	1,413.8	2.3%	1,068.4	1,102.5	3.2%	1,347.9	1,292.1	-4.1%	3,798.3	3,808.4	0.3%
March		131.3			106.9			109.4			347.6		
	YTD	1,513.3			1,175.3			1,457.3			4,145.9		
April		127.4			115.3			111.1			353.8		
	YTD	1,640.7			1,290.6			1,568.4			4,499.7		
May		143.7			127.7			134.1			405.4		
	YTD	1,784.4			1,418.3			1,702.4			4,905.1		
June		122.7			119.9			148.7			391.2		
	YTD	1,907.1			1,538.1			1,851.1			5,296.4		
Total		1,907.1			1,538.1			1,851.1			5,296.4		

Produced by the Economics, Data and Insights team at Dairy Australia, Source: Dairy Manufacturers

Please Note: These reports contain data based on a combination of voluntary direct reporting from processors, and data sourced from government agencies. Retrospective adjustments are possible if new or revised data is received.

Milk production report (Litres '000s)

Victoria

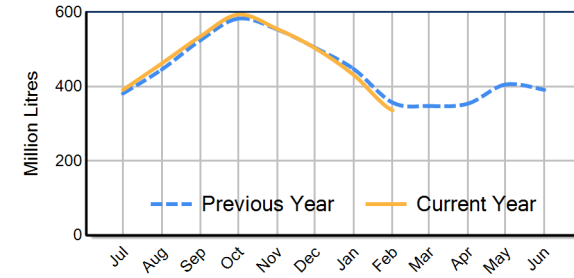


		Eastern	Northern	Western	VIC
Month	February-23	121,180	94,868	107,642	323,690
	February-24	135,352	105,137	116,428	356,917
	February-25	125,577	104,817	105,496	335,890
	% change	-7.2%	-0.3%	-9.4%	-5.9%
Region Share	February-24	37.9%	29.5%	32.6%	100.0%
	February-25	37.4%	31.2%	31.4%	100.0%
		Eastern	Northern	Western	VIC
Year To Date	2022/2023	1,326,603	1,036,499	1,342,627	3,705,729
	2023/2024	1,382,002	1,068,420	1,347,867	3,798,289
	2024/2025	1,413,751	1,102,519	1,292,125	3,808,395
	% change	2.3%	3.2%	-4.1%	0.3%
Region Share	2023/2024	36.4%	28.1%	35.5%	100.0%
	2024/2025	37.1%	28.9%	33.9%	100.0%
		Eastern	Northern	Western	VIC
Total	2023/2024	1,907,072	1,538,138	1,851,145	5,296,354
	Region Share	36.0%	29.0%	35.0%	100.0%

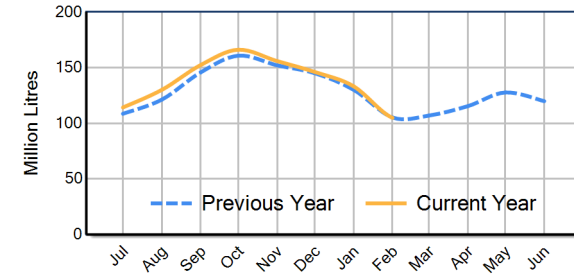
Average Milkfat & Protein (%)

		Eastern	Northern	Western	VIC
Milkfat	February-23	4.44%	4.28%	4.52%	4.42%
	February-24	4.37%	4.28%	4.48%	4.38%
	February-25	4.47%	4.32%	4.55%	4.45%
	% change 24/25	2.3%	1.0%	1.7%	1.6%
		Eastern	Northern	Western	VIC
Protein	February-23	3.41%	3.36%	3.48%	3.42%
	February-24	3.42%	3.38%	3.47%	3.42%
	February-25	3.45%	3.44%	3.50%	3.46%
	% change 24/25	1.0%	1.8%	0.8%	1.1%

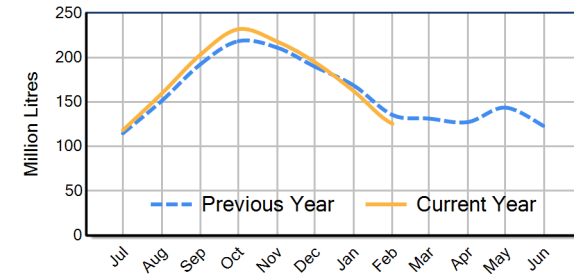
VIC Milk Production - Total Regions



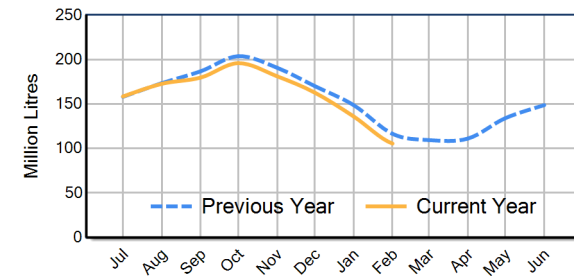
VIC Milk Production - Northern Region



VIC Milk Production - Eastern Region



VIC Milk Production - Western Region



Please note: These reports contain data based on a combination of voluntary direct reporting from processors, and data sourced from government agencies. Retrospective adjustments are possible if new or revised data is received.