

## BIOSECURITY IN AUSTRALIA

Dr Zoe Vogels BVSc MANZCVS

National Milk Quality & Biosecurity Lead, Dairy Australia

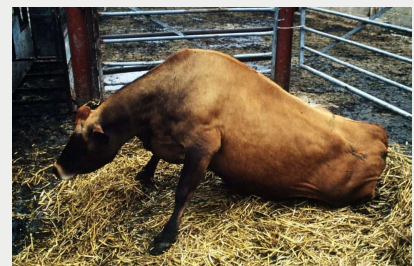


1

## FREEDOM FROM DISEASE

Australia is lucky to be free from many significant cattle diseases:

- Foot and Mouth Disease (FMD)
- Lumpy Skin Disease (LSD)
- Bovine Spongiform Encephalopathy (BSE)
- Bovine tuberculosis (TB)
- Brucellosis
- Avian Influenza H5N1



<https://inews.co.uk/news/long-reads/foot-and-mouth-disease-20-years-farmers-case-studies-livestock-slaughtered-875811>  
<https://www.thesun.co.uk/news/7525384/mad-cow-disease-bse-outbreak-dangerous-humans-vcjd/>  
<https://www.nature.com/articles/d44151-024-00047-1>

2

## FREEDOM FROM DISEASE



Photo by [Pin Adventure Map](#) on [Unsplash](#)

3

## FREEDOM FROM DISEASE



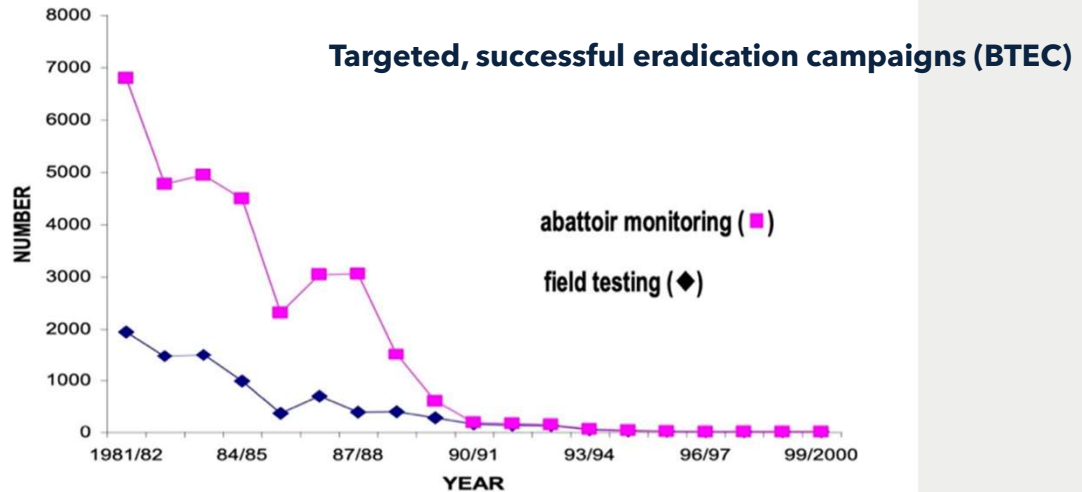
**Relatively young cattle population (~240 years)**

*An Overlanding Mob*

[Cattle and colonialism: the animals that built Sydney - The Architectural Review](#)

4

## FREEDOM FROM DISEASE



**Fig. 1** Tuberculosis infection in cattle in Australia (1981–2000), as detected by abattoir monitoring and field testing. Adapted from [2]

[Australia's colourful path to tuberculosis freedom | Irish Veterinary Journal | Full Text](#)

5

## BORDER CONTROL: PREVENTING ENTRY



- Australia doesn't allow imports of any susceptible live animals, semen or uncooked meat or unprocessed dairy products from FMD-affected countries or zones
- Highest risk of entry of FMD to Australia is contaminated, illegally imported or brought in animal products, such as meat or dairy (that then come in contact with susceptible animals)



6



## BORDER CONTROL: PREVENTING ENTRY



Inspection of incoming mail, passengers and luggage



<https://www.abc.net.au/news/2022-10-08/what-happened-to-the-threat-of-foot-and-mouth-disease/101496660>

7

## BORDER CONTROL: PREVENTING ENTRY



Recommendations for dairy farms:

- Keep a closed herd - breed own replacements
- Maintain farm boundary fences
- No shared tracks between animals and vehicles
- Minimise visitors on farm
- Identify sick animals quickly, isolate and seek diagnosis



8

## DETECT DISEASE EARLY: SURVEILLANCE

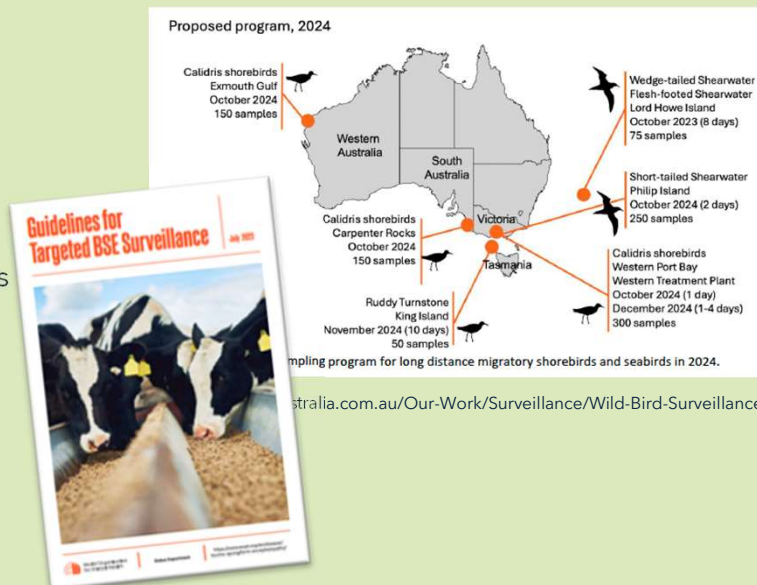


Vector monitoring:

- H5N1
- Lumpy skin disease

Funded investigation

- Disease exclusions (BSE)
- Significant disease investigations



9

## DETECT DISEASE EARLY: AWARENESS



Industry and government education and awareness activities




- Fact sheets and disease guides
- Webinars and social media posts
- 24-hour free call service for reporting suspected incidences of exotic diseases – 1800 675 888.



**EMERGENCY ANIMAL DISEASES IN CATTLE**




1 AUGUST 2022

**Foot-and-mouth Disease (FMD)**




- Blisters/ulcers in mouth, tongue, nose, teats and feet
- Sudden drop in milk production
- Drooling/excess salivation
- Reduced appetite
- Lameness
- Sudden death in young animals
- Fever

**Lumpy Skin Disease (LSD)**

- Skin nodules (lumps)
- Fever
- Discharge from the eyes and nose
- Loss of body condition
- Drop in milk production

**IF YOU SEE ANYTHING UNUSUAL CALL THE EMERGENCY ANIMAL DISEASE WATCH HOTLINE ON 1800 675 888**

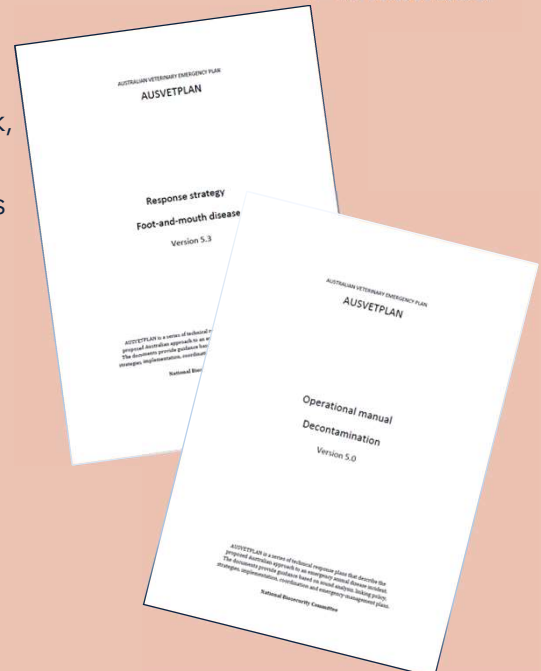




10

## CONTAINING DISEASE SPREAD: (AND HOPEFULLY ERADICATING IT)

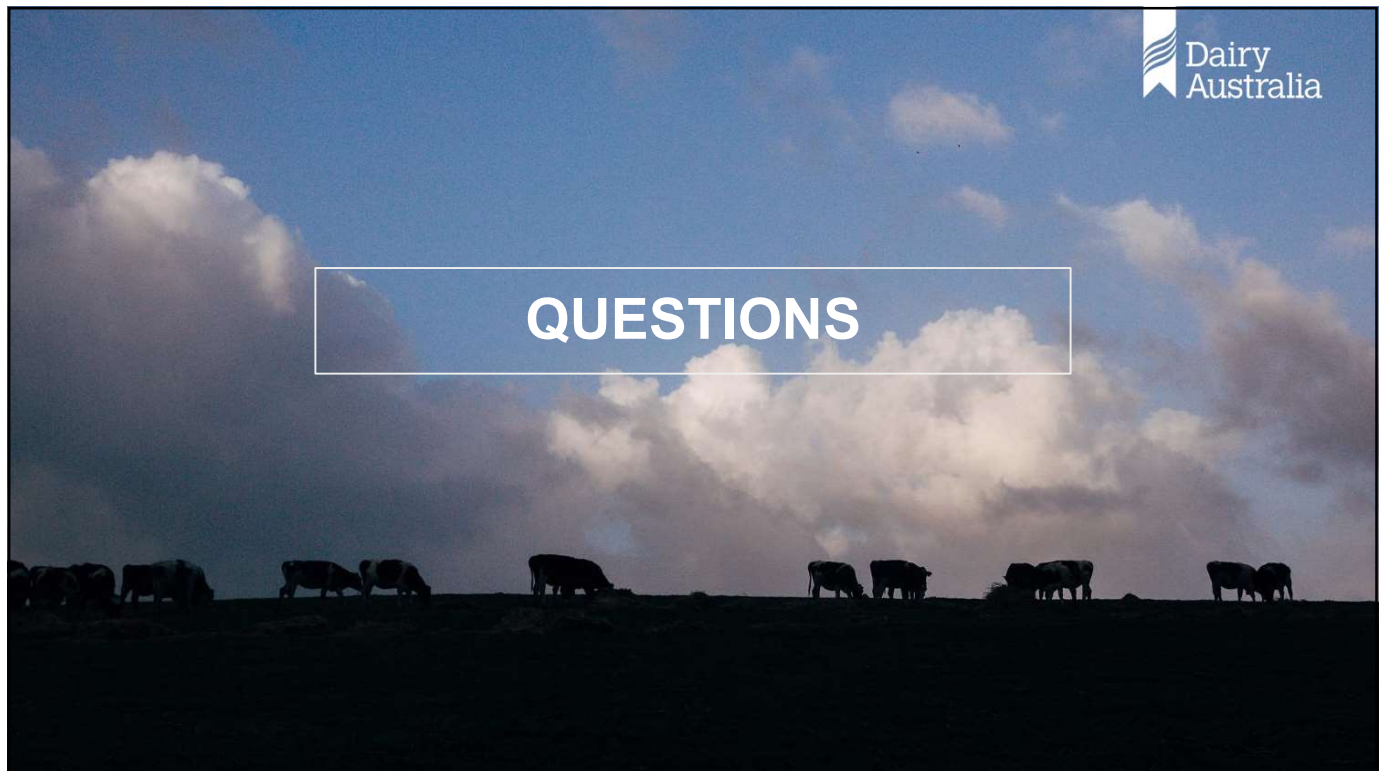
In the event of an emergency animal disease outbreak, Australia has a national contingency framework:

- Cost sharing agreement between animal industries and government
- A series of technical manuals and documents that describe the nationally agreed and preferred approach to responding to EADs
- Facilitate effective responses to an EAD by providing a consistent, pre-agreed approach
- Research to support control activities, food safety (LSD pasteurisation studies)



11

## QUESTIONS



12