

New South Wales Milk Production

24/25 by Region

(Million Litres)



		Inland/Central			North Coast			Southern			New South Wales		
		23/24	24/25	Var %	23/24	24/25	Var %	23/24	24/25	Var %	23/24	24/25	Var %
July		21.0	21.6	2.6%	21.7	21.9	0.9%	41.9	44.4	6.0%	84.7	87.9	3.8%
	YTD	21.0	21.6	2.6%	21.7	21.9	0.9%	41.9	44.4	6.0%	84.7	87.9	3.8%
August		22.0	22.7	3.3%	23.4	23.5	0.6%	44.7	49.1	9.8%	90.1	95.3	5.8%
	YTD	43.1	44.3	2.9%	45.1	45.4	0.7%	86.6	93.5	8.0%	174.8	183.3	4.9%
September		21.3	22.5	5.5%	24.3	24.5	0.9%	45.9	50.3	9.6%	91.6	97.3	6.3%
	YTD	64.4	66.8	3.8%	69.4	69.9	0.8%	132.6	143.9	8.5%	266.3	280.6	5.4%
October		22.7	23.1	1.9%	25.1	25.4	1.5%	48.4	53.2	9.8%	96.2	101.8	5.8%
	YTD	87.1	90.0	3.3%	94.4	95.4	1.0%	181.0	197.1	8.9%	362.5	382.4	5.5%
November		22.7	22.0	-2.9%	24.8	23.1	-6.9%	46.6	50.4	8.1%	94.0	95.4	1.5%
	YTD	109.8	112.0	2.0%	119.2	118.4	-0.7%	227.6	247.4	8.7%	456.6	477.8	4.7%
December		22.6	21.8	-3.3%	24.1	21.6	-10.3%	47.1	49.6	5.3%	93.8	93.1	-0.8%
	YTD	132.3	133.8	1.1%	143.3	140.1	-2.3%	274.7	297.1	8.1%	550.4	570.9	3.7%
January		21.5	22.8	6.2%	22.7	20.6	-9.3%	44.4	47.5	6.9%	88.6	90.9	2.6%
	YTD	153.8	156.6	1.8%	166.0	160.7	-3.2%	319.1	344.5	8.0%	638.9	661.8	3.6%
February		20.1	18.5	-7.7%	19.2	18.6	-3.1%	38.4	41.3	7.7%	77.7	78.5	1.1%
	YTD	173.9	175.1	0.7%	185.2	179.3	-3.2%	357.5	385.9	7.9%	716.6	740.3	3.3%
March		20.9	20.0	-4.1%	19.6	19.5	-0.6%	39.8	43.5	9.2%	80.3	83.0	3.4%
	YTD	194.8	195.2	0.2%	204.8	198.7	-3.0%	397.3	429.4	8.1%	796.9	823.3	3.3%
April		21.1	20.2	-4.3%	18.1	18.2	1.0%	39.2	42.4	8.2%	78.3	80.8	3.2%
	YTD	215.8	215.3	-0.2%	222.9	217.0	-2.6%	436.5	471.7	8.1%	875.2	904.0	3.3%
May		22.7	21.7	-4.4%	18.9	18.0	-5.1%	41.0	44.5	8.5%	82.6	84.1	1.8%
	YTD	238.5	237.0	-0.6%	241.8	234.9	-2.8%	477.5	516.2	8.1%	957.8	988.2	3.2%
June		22.7	21.7	-4.5%	19.4	17.9	-7.7%	40.4	43.6	7.9%	82.4	83.1	0.8%
	YTD	261.2	258.7	-1.0%	261.2	252.8	-3.2%	517.8	559.8	8.1%	1,040.2	1,071.3	3.0%
Total		261.2	258.7		261.2	252.8		517.8	559.8		1,040.2	1,071.3	

Produced by the Economics, Data and Insights team at Dairy Australia, Source: Dairy Manufacturers

Please Note: These reports contain data based on a combination of voluntary direct reporting from processors, and data sourced from government agencies. Retrospective adjustments are possible if new or revised data is received.

Milk production report (Litres '000s)

New South Wales

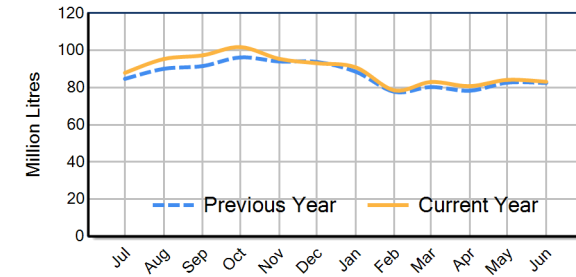


		Inland/Central	North Coast	Southern	NSW
Month	June-23	21,028	19,614	39,803	80,446
	June-24	22,712	19,359	40,377	82,449
	June-25	21,688	17,873	43,567	83,127
	% change	-4.5%	-7.7%	7.9%	0.8%
Region Share	June-24	27.5%	23.5%	49.0%	100.0%
	June-25	26.1%	21.5%	52.4%	100.0%
		Inland/Central	North Coast	Southern	NSW
Year To Date	2022/2023	235,899	252,063	501,901	989,863
	2023/2024	261,215	261,178	517,842	1,040,235
	2024/2025	258,677	252,819	559,792	1,071,288
	% change	-1.0%	-3.2%	8.1%	3.0%
Region Share	2023/2024	25.1%	25.1%	49.8%	100.0%
	2024/2025	24.1%	23.6%	52.3%	100.0%
		Inland/Central	North Coast	Southern	NSW
Total	2023/2024	261,215	261,178	517,842	1,040,235
	Region Share	25.1%	25.1%	49.8%	100.0%

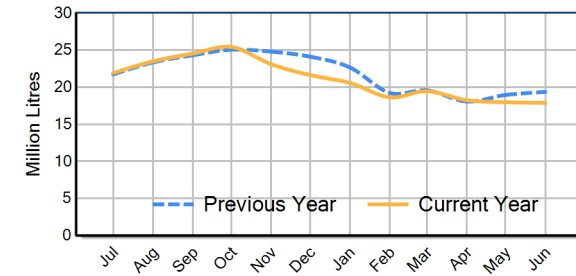
Average Milkfat & Protein (%)

		Inland/Central	North Coast	Southern	NSW
Milkfat	June-23	4.10%	4.24%	4.28%	4.22%
	June-24	4.00%	4.22%	4.30%	4.20%
	June-25	4.12%	4.28%	4.28%	4.24%
	% change 24/25	3.0%	1.4%	-0.6%	0.9%
		Inland/Central	North Coast	Southern	NSW
Protein	June-23	3.38%	3.47%	3.48%	3.45%
	June-24	3.40%	3.51%	3.54%	3.49%
	June-25	3.46%	3.45%	3.55%	3.50%
	% change 24/25	1.7%	-1.7%	0.2%	0.3%

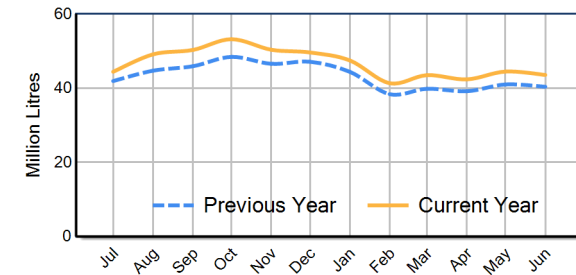
NSW Milk Production - Total Regions



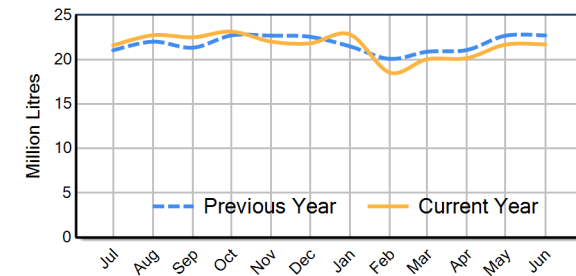
NSW Milk Production - North Coast Region



NSW Milk Production - Southern Region



NSW Milk Production - Inland/Central Region



Please note: These reports contain data based on a combination of voluntary direct reporting from processors, and data sourced from government agencies. Retrospective adjustments are possible if new or revised data is received.