

New South Wales Milk Production

25/26 by Region

(Million Litres)



| | | Inland/Central | | | North Coast | | | Southern | | | New South Wales | | |
|-----------|-----|----------------|-------|-------|-------------|-------|-------|----------|-------|-------|-----------------|-------|-------|
| | | 24/25 | 25/26 | Var % | 24/25 | 25/26 | Var % | 24/25 | 25/26 | Var % | 24/25 | 25/26 | Var % |
| July | | 24.0 | 24.3 | 1.1% | 19.5 | 18.3 | -6.1% | 44.4 | 47.6 | 7.1% | 87.9 | 90.1 | 2.5% |
| | YTD | 24.0 | 24.3 | 1.1% | 19.5 | 18.3 | -6.1% | 44.4 | 47.6 | 7.1% | 87.9 | 90.1 | 2.5% |
| August | | 25.1 | 24.8 | -1.1% | 21.1 | 19.3 | -8.8% | 49.1 | 51.1 | 4.1% | 95.3 | 95.2 | -0.1% |
| | YTD | 49.1 | 49.1 | 0.0% | 40.6 | 37.5 | -7.5% | 93.5 | 98.7 | 5.5% | 183.3 | 185.4 | 1.1% |
| September | | 24.7 | 25.0 | 1.2% | 22.3 | 21.0 | -6.1% | 50.3 | 52.4 | 4.1% | 97.3 | 98.3 | 1.0% |
| | YTD | 73.8 | 74.1 | 0.4% | 62.9 | 58.5 | -7.0% | 143.9 | 151.0 | 5.0% | 280.6 | 283.7 | 1.1% |
| October | | 25.5 | 25.9 | 1.5% | 23.1 | 21.9 | -5.1% | 53.2 | 55.6 | 4.5% | 101.8 | 103.4 | 1.6% |
| | YTD | 99.3 | 100.0 | 0.7% | 86.0 | 80.4 | -6.5% | 197.1 | 206.6 | 4.9% | 382.4 | 387.0 | 1.2% |
| November | | 24.2 | | | 20.9 | | | 50.4 | | | 95.4 | | |
| | YTD | 123.5 | | | 106.9 | | | 247.4 | | | 477.8 | | |
| December | | 23.9 | | | 19.5 | | | 49.6 | | | 93.1 | | |
| | YTD | 147.5 | | | 126.4 | | | 297.1 | | | 570.9 | | |
| January | | 24.8 | | | 18.6 | | | 47.5 | | | 90.9 | | |
| | YTD | 172.3 | | | 144.9 | | | 344.5 | | | 661.8 | | |
| February | | 20.4 | | | 16.8 | | | 41.3 | | | 78.5 | | |
| | YTD | 192.7 | | | 161.7 | | | 385.9 | | | 740.3 | | |
| March | | 22.2 | | | 17.3 | | | 43.5 | | | 83.0 | | |
| | YTD | 214.9 | | | 179.0 | | | 429.4 | | | 823.3 | | |
| April | | 22.5 | | | 15.9 | | | 42.4 | | | 80.8 | | |
| | YTD | 237.4 | | | 194.8 | | | 471.7 | | | 904.0 | | |
| May | | 24.1 | | | 15.5 | | | 44.5 | | | 84.1 | | |
| | YTD | 261.5 | | | 210.4 | | | 516.2 | | | 988.2 | | |
| June | | 24.0 | | | 15.5 | | | 43.6 | | | 83.1 | | |
| | YTD | 285.6 | | | 225.9 | | | 559.8 | | | 1,071.3 | | |
| Total | | 285.6 | | | 225.9 | | | 559.8 | | | 1,071.3 | | |

Produced by the Economics, Data and Insights team at Dairy Australia, Source: Dairy Manufacturers

Please Note: *These reports contain data based on a combination of voluntary direct reporting from processors, and data sourced from government agencies. Retrospective adjustments are possible if new or revised data is received.*

Due to the reallocation of some postcodes, the volume of milk produced in each subregion has been revised retrospectively.

Milk production report (Litres '000s)

New South Wales

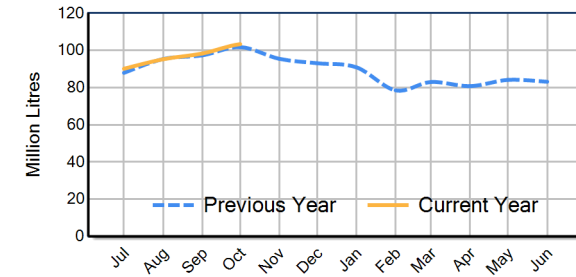


| | | Inland/Central | North Coast | Southern | NSW |
|--------------|--------------|----------------|-------------|----------|-----------|
| Month | October-23 | 25,196 | 22,575 | 48,444 | 96,215 |
| | October-24 | 25,501 | 23,063 | 53,207 | 101,770 |
| | October-25 | 25,886 | 21,877 | 55,598 | 103,361 |
| | % change | 1.5% | -5.1% | 4.5% | 1.6% |
| Region Share | October-24 | 25.1% | 22.7% | 52.3% | 100.0% |
| | October-25 | 25.0% | 21.2% | 53.8% | 100.0% |
| | | Inland/Central | North Coast | Southern | NSW |
| Year To Date | 2023/2024 | 95,900 | 85,642 | 180,998 | 362,540 |
| | 2024/2025 | 99,337 | 85,985 | 197,057 | 382,379 |
| | 2025/2026 | 99,995 | 80,407 | 206,647 | 387,049 |
| | % change | 0.7% | -6.5% | 4.9% | 1.2% |
| Region Share | 2024/2025 | 26.0% | 22.5% | 51.5% | 100.0% |
| | 2025/2026 | 25.8% | 20.8% | 53.4% | 100.0% |
| | | Inland/Central | North Coast | Southern | NSW |
| Total | 2024/2025 | 285,581 | 225,914 | 559,792 | 1,071,288 |
| | Region Share | 26.7% | 21.1% | 52.3% | 100.0% |

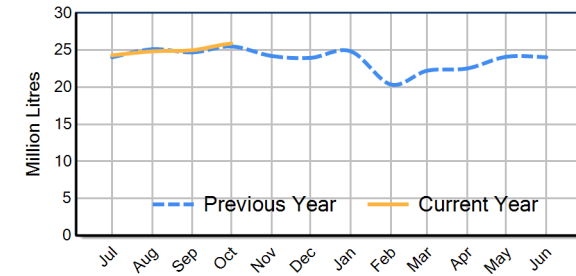
Average Milkfat & Protein (%)

| | | Inland/Central | North Coast | Southern | NSW |
|---------|----------------|----------------|-------------|----------|-------|
| Milkfat | October-23 | 3.87% | 4.04% | 4.05% | 4.00% |
| | October-24 | 4.00% | 4.08% | 4.06% | 4.05% |
| | October-25 | 3.98% | 3.99% | 4.06% | 4.03% |
| | % change 25/26 | -0.5% | -2.3% | 0.1% | -0.6% |
| | | Inland/Central | North Coast | Southern | NSW |
| Protein | October-23 | 3.29% | 3.28% | 3.36% | 3.32% |
| | October-24 | 3.34% | 3.36% | 3.40% | 3.38% |
| | October-25 | 3.38% | 3.32% | 3.41% | 3.38% |
| | % change 25/26 | 1.0% | -1.2% | 0.1% | 0.1% |

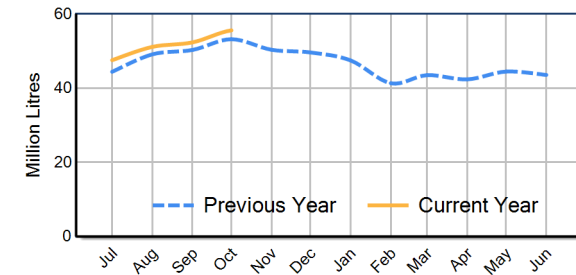
NSW Milk Production - Total Regions



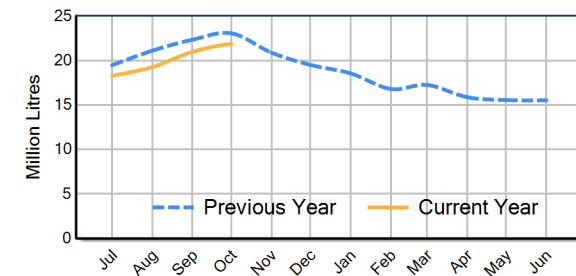
NSW Milk Production - Inland/Central Region



NSW Milk Production - Southern Region



NSW Milk Production - North Coast Region



Please note: These reports contain data based on a combination of voluntary direct reporting from processors, and data sourced from government agencies. Retrospective adjustments are possible if new or revised data is received.

Due to the reallocation of some postcodes, the volume of milk produced in each subregion has been revised retrospectively.