

# Victoria Milk Production

## 24/25 by Region

### (Million Litres)



		Eastern			Northern			Western			Victoria		
		23/24	24/25	Var %	23/24	24/25	Var %	23/24	24/25	Var %	23/24	24/25	Var %
July		114.8	118.2	3.0%	108.5	114.2	5.2%	158.0	158.5	0.3%	381.3	390.9	2.5%
	YTD	114.8	118.2	3.0%	108.5	114.2	5.2%	158.0	158.5	0.3%	381.3	390.9	2.5%
August		151.3	159.5	5.4%	121.2	130.0	7.2%	173.4	172.7	-0.4%	445.9	462.2	3.6%
	YTD	266.1	277.7	4.4%	229.7	244.1	6.3%	331.4	331.2	-0.1%	827.3	853.0	3.1%
September		192.6	203.4	5.6%	145.7	152.3	4.5%	186.8	179.7	-3.8%	525.1	535.4	2.0%
	YTD	458.8	481.2	4.9%	375.5	396.5	5.6%	518.2	510.8	-1.4%	1,352.4	1,388.5	2.7%
October		218.4	231.8	6.2%	160.7	166.1	3.3%	203.7	195.9	-3.8%	582.9	593.8	1.9%
	YTD	677.2	713.0	5.3%	536.2	562.6	4.9%	721.9	706.7	-2.1%	1,935.3	1,982.3	2.4%
November		211.1	218.0	3.2%	152.0	155.9	2.5%	190.7	181.1	-5.0%	553.9	555.0	0.2%
	YTD	888.3	931.0	4.8%	688.2	718.4	4.4%	912.6	887.9	-2.7%	2,489.2	2,537.3	1.9%
December		189.7	194.9	2.7%	145.0	146.1	0.8%	170.1	162.8	-4.3%	504.8	503.8	-0.2%
	YTD	1,078.0	1,125.9	4.4%	833.2	864.5	3.8%	1,082.7	1,050.6	-3.0%	2,994.0	3,041.0	1.6%
January		168.6	162.3	-3.8%	130.1	133.2	2.4%	148.7	136.0	-8.6%	447.4	431.5	-3.6%
	YTD	1,246.7	1,288.2	3.3%	963.3	997.7	3.6%	1,231.4	1,186.6	-3.6%	3,441.4	3,472.5	0.9%
February		135.4	125.6	-7.2%	105.1	104.8	-0.3%	116.4	105.5	-9.4%	356.9	335.9	-5.9%
	YTD	1,382.0	1,413.8	2.3%	1,068.4	1,102.5	3.2%	1,347.9	1,292.1	-4.1%	3,798.3	3,808.4	0.3%
March		131.3	132.1	0.6%	106.9	108.2	1.2%	109.4	105.7	-3.4%	347.6	346.0	-0.5%
	YTD	1,513.3	1,545.8	2.1%	1,175.3	1,210.7	3.0%	1,457.3	1,397.9	-4.1%	4,145.9	4,154.4	0.2%
April		127.4	134.3	5.4%	115.3	117.2	1.6%	111.1	106.3	-4.3%	353.8	357.8	1.1%
	YTD	1,640.7	1,680.1	2.4%	1,290.6	1,327.9	2.9%	1,568.4	1,504.2	-4.1%	4,499.7	4,512.2	0.3%
May		143.7	134.0	-6.7%	127.7	131.6	3.1%	134.1	121.7	-9.2%	405.4	387.4	-4.4%
	YTD	1,784.4	1,814.1	1.7%	1,418.3	1,459.5	2.9%	1,702.4	1,625.9	-4.5%	4,905.1	4,899.6	-0.1%
June		122.7	115.8	-5.6%	119.9	119.8	0.0%	148.7	130.5	-12.2%	391.2	366.1	-6.4%
	YTD	1,907.1	1,929.9	1.2%	1,538.1	1,579.4	2.7%	1,851.1	1,756.4	-5.1%	5,296.4	5,265.7	-0.6%
Total		1,907.1	1,929.9		1,538.1	1,579.4		1,851.1	1,756.4		5,296.4	5,265.7	

Produced by the Economics, Data and Insights team at Dairy Australia, Source: Dairy Manufacturers

Please Note: These reports contain data based on a combination of voluntary direct reporting from processors, and data sourced from government agencies. Retrospective adjustments are possible if new or revised data is received.

# Milk production report (Litres '000s)

## Victoria

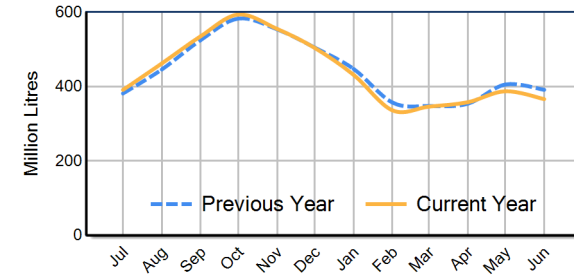


		Eastern	Northern	Western	VIC
Month	June-23	112,574	111,266	149,505	373,346
	June-24	122,653	119,859	148,731	391,243
	June-25	115,766	119,824	130,544	366,135
	% change	-5.6%	0.0%	-12.2%	-6.4%
Region Share	June-24	31.3%	30.6%	38.0%	100.0%
	June-25	31.6%	32.7%	35.7%	100.0%
		Eastern	Northern	Western	VIC
Year To Date	2022/2023	1,815,995	1,475,567	1,849,478	5,141,041
	2023/2024	1,907,072	1,538,138	1,851,145	5,296,354
	2024/2025	1,929,880	1,579,373	1,756,439	5,265,692
	% change	1.2%	2.7%	-5.1%	-0.6%
Region Share	2023/2024	36.0%	29.0%	35.0%	100.0%
	2024/2025	36.7%	30.0%	33.4%	100.0%
		Eastern	Northern	Western	VIC
Total	2023/2024	1,907,072	1,538,138	1,851,145	5,296,354
	Region Share	36.0%	29.0%	35.0%	100.0%

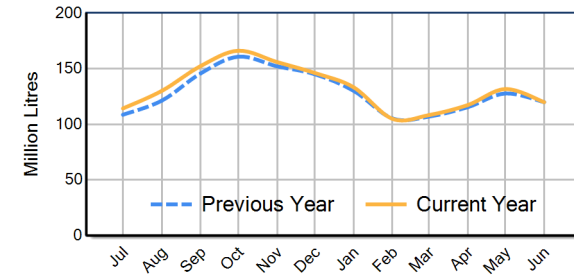
## Average Milkfat & Protein (%)

		Eastern	Northern	Western	VIC
Milkfat	June-23	4.42%	4.37%	4.38%	4.39%
	June-24	4.44%	4.41%	4.39%	4.41%
	June-25	4.50%	4.46%	4.57%	4.51%
	% change 24/25	1.4%	1.1%	4.3%	2.3%
		Eastern	Northern	Western	VIC
Protein	June-23	3.57%	3.49%	3.44%	3.49%
	June-24	3.59%	3.57%	3.45%	3.53%
	June-25	3.57%	3.59%	3.43%	3.53%
	% change 24/25	-0.5%	0.5%	-0.5%	-0.1%

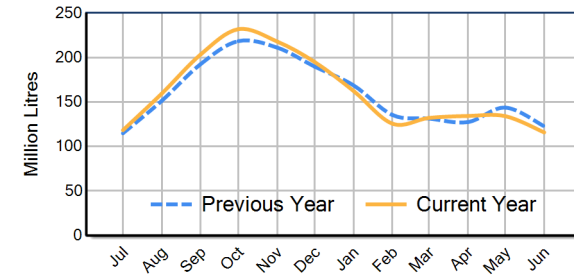
VIC Milk Production - Total Regions



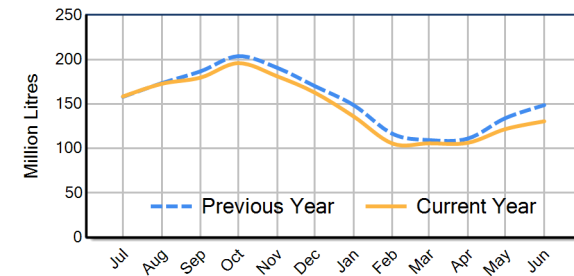
VIC Milk Production - Northern Region



VIC Milk Production - Eastern Region



VIC Milk Production - Western Region



Please note: These reports contain data based on a combination of voluntary direct reporting from processors, and data sourced from government agencies. Retrospective adjustments are possible if new or revised data is received.