

Victoria Milk Production

24/25 by Region

(Million Litres)



		Eastern			Northern			Western			Victoria		
		23/24	24/25	Var %	23/24	24/25	Var %	23/24	24/25	Var %	23/24	24/25	Var %
July		114.8	118.2	3.0%	108.5	114.2	5.2%	158.0	158.5	0.3%	381.3	390.9	2.5%
	YTD	114.8	118.2	3.0%	108.5	114.2	5.2%	158.0	158.5	0.3%	381.3	390.9	2.5%
August		151.3	159.5	5.4%	121.2	130.0	7.2%	173.4	172.7	-0.4%	445.9	462.2	3.6%
	YTD	266.1	277.7	4.4%	229.7	244.1	6.3%	331.4	331.2	-0.1%	827.3	853.0	3.1%
September		192.6	203.4	5.6%	145.7	152.3	4.5%	186.8	179.7	-3.8%	525.1	535.4	2.0%
	YTD	458.8	481.2	4.9%	375.5	396.5	5.6%	518.2	510.8	-1.4%	1,352.4	1,388.5	2.7%
October		218.4	231.8	6.2%	160.7	166.1	3.3%	203.7	195.9	-3.8%	582.9	593.8	1.9%
	YTD	677.2	713.0	5.3%	536.2	562.6	4.9%	721.9	706.7	-2.1%	1,935.3	1,982.3	2.4%
November		211.1	218.0	3.2%	152.0	155.9	2.5%	190.7	181.1	-5.0%	553.9	555.0	0.2%
	YTD	888.3	931.0	4.8%	688.2	718.4	4.4%	912.6	887.9	-2.7%	2,489.2	2,537.3	1.9%
December		189.7	194.9	2.7%	145.0	146.1	0.8%	170.1	162.8	-4.3%	504.8	503.8	-0.2%
	YTD	1,078.0	1,125.9	4.4%	833.2	864.5	3.8%	1,082.7	1,050.6	-3.0%	2,994.0	3,041.0	1.6%
January		168.6	162.3	-3.8%	130.1	133.2	2.4%	148.7	136.0	-8.6%	447.4	431.5	-3.6%
	YTD	1,246.7	1,288.2	3.3%	963.3	997.7	3.6%	1,231.4	1,186.6	-3.6%	3,441.4	3,472.5	0.9%
February		135.4	125.6	-7.2%	105.1	104.8	-0.3%	116.4	105.5	-9.4%	356.9	335.9	-5.9%
	YTD	1,382.0	1,413.8	2.3%	1,068.4	1,102.5	3.2%	1,347.9	1,292.1	-4.1%	3,798.3	3,808.4	0.3%
March		131.3	132.1	0.6%	106.9	108.2	1.2%	109.4	105.7	-3.4%	347.6	346.0	-0.5%
	YTD	1,513.3	1,545.8	2.1%	1,175.3	1,210.7	3.0%	1,457.3	1,397.9	-4.1%	4,145.9	4,154.4	0.2%
April		127.4			115.3			111.1			353.8		
	YTD	1,640.7			1,290.6			1,568.4			4,499.7		
May		143.7			127.7			134.1			405.4		
	YTD	1,784.4			1,418.3			1,702.4			4,905.1		
June		122.7			119.9			148.7			391.2		
	YTD	1,907.1			1,538.1			1,851.1			5,296.4		
Total		1,907.1			1,538.1			1,851.1			5,296.4		

Produced by the Economics, Data and Insights team at Dairy Australia, Source: Dairy Manufacturers

Please Note: These reports contain data based on a combination of voluntary direct reporting from processors, and data sourced from government agencies. Retrospective adjustments are possible if new or revised data is received.

Milk production report (Litres '000s)

Victoria

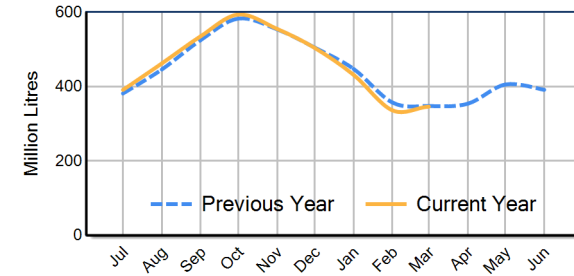


		Eastern	Northern	Western	VIC	
Month	March-23	123,998	99,423	110,330	333,750	
	March-24	131,345	106,866	109,427	347,638	
	March-25	132,067	108,199	105,737	346,003	
	% change	0.6%	1.2%	-3.4%	-0.5%	
Region Share	March-24	37.8%	30.7%	31.5%	100.0%	
	March-25	38.2%	31.3%	30.6%	100.0%	
Year To Date			Eastern	Northern	Western	VIC
	2022/2023	1,450,601	1,135,922	1,452,957	4,039,479	
	2023/2024	1,513,347	1,175,286	1,457,294	4,145,926	
	2024/2025	1,545,819	1,210,718	1,397,861	4,154,398	
	% change	2.1%	3.0%	-4.1%	0.2%	
Region Share	2023/2024	36.5%	28.3%	35.2%	100.0%	
	2024/2025	37.2%	29.1%	33.6%	100.0%	
Total			Eastern	Northern	Western	VIC
	2023/2024	1,907,072	1,538,138	1,851,145	5,296,354	
	Region Share	36.0%	29.0%	35.0%	100.0%	

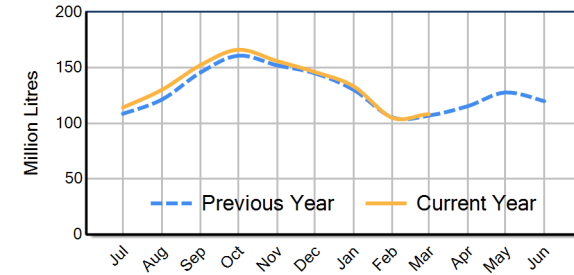
Average Milkfat & Protein (%)

		Eastern	Northern	Western	VIC	
Milkfat	March-23	4.62%	4.40%	4.53%	4.52%	
	March-24	4.60%	4.42%	4.56%	4.53%	
	March-25	4.60%	4.42%	4.62%	4.55%	
	% change 24/25	0.0%	-0.1%	1.3%	0.4%	
Protein			Eastern	Northern	Western	VIC
	March-23	3.53%	3.47%	3.52%	3.51%	
	March-24	3.51%	3.47%	3.49%	3.49%	
	March-25	3.53%	3.51%	3.52%	3.52%	
	% change 24/25	0.5%	1.2%	0.9%	0.9%	

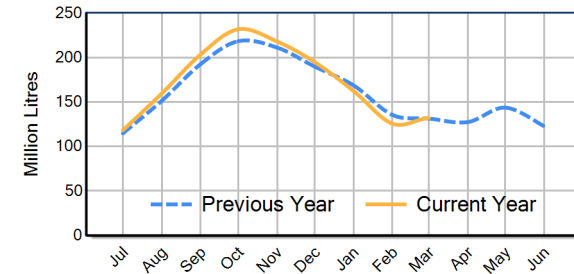
VIC Milk Production - Total Regions



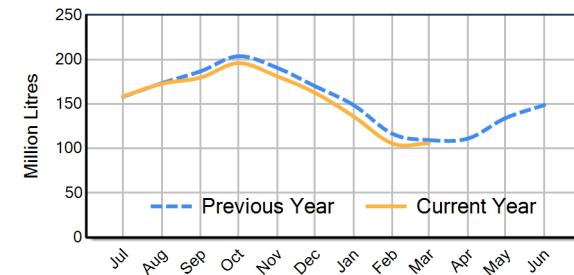
VIC Milk Production - Northern Region



VIC Milk Production - Eastern Region



VIC Milk Production - Western Region



Please note: These reports contain data based on a combination of voluntary direct reporting from processors, and data sourced from government agencies. Retrospective adjustments are possible if new or revised data is received.