

# New South Wales Milk Production

## 24/25 by Region

### (Million Litres)



		Inland/Central			North Coast			Southern			New South Wales		
		23/24	24/25	Var %	23/24	24/25	Var %	23/24	24/25	Var %	23/24	24/25	Var %
July		21.0	21.6	2.6%	21.7	21.9	0.9%	41.9	44.4	6.0%	84.7	87.9	3.8%
	YTD	21.0	21.6	2.6%	21.7	21.9	0.9%	41.9	44.4	6.0%	84.7	87.9	3.8%
August		22.0	22.7	3.3%	23.4	23.5	0.6%	44.7	49.1	9.8%	90.1	95.3	5.8%
	YTD	43.1	44.3	2.9%	45.1	45.4	0.7%	86.6	93.5	8.0%	174.8	183.3	4.9%
September		21.3	22.5	5.5%	24.3	24.5	0.9%	45.9	50.3	9.6%	91.6	97.3	6.3%
	YTD	64.4	66.8	3.8%	69.4	69.9	0.8%	132.6	143.9	8.5%	266.3	280.6	5.4%
October		22.7	23.1	1.9%	25.1	25.4	1.5%	48.4	53.2	9.8%	96.2	101.8	5.8%
	YTD	87.1	90.0	3.3%	94.4	95.4	1.0%	181.0	197.1	8.9%	362.5	382.4	5.5%
November		22.7	22.0	-2.9%	24.8	23.1	-6.9%	46.6	50.4	8.1%	94.0	95.4	1.5%
	YTD	109.8	112.0	2.0%	119.2	118.4	-0.7%	227.6	247.4	8.7%	456.6	477.8	4.7%
December		22.6	21.8	-3.3%	24.1	21.6	-10.3%	47.1	49.6	5.3%	93.8	93.1	-0.8%
	YTD	132.3	133.8	1.1%	143.3	140.1	-2.3%	274.7	297.1	8.1%	550.4	570.9	3.7%
January		21.5	22.8	6.2%	22.7	20.6	-9.3%	44.4	47.5	6.9%	88.6	90.9	2.6%
	YTD	153.8	156.6	1.8%	166.0	160.7	-3.2%	319.1	344.5	8.0%	638.9	661.8	3.6%
February		20.1	18.5	-7.7%	19.2	18.6	-3.1%	38.4	41.3	7.7%	77.7	78.5	1.1%
	YTD	173.9	175.1	0.7%	185.2	179.3	-3.2%	357.5	385.9	7.9%	716.6	740.3	3.3%
March		20.9	20.0	-4.1%	19.6	19.5	-0.6%	39.8	43.5	9.2%	80.3	83.0	3.4%
	YTD	194.8	195.2	0.2%	204.8	198.7	-3.0%	397.3	429.4	8.1%	796.9	823.3	3.3%
April		21.1			18.1			39.2			78.3		
	YTD	215.8			222.9			436.5			875.2		
May		22.7			18.9			41.0			82.6		
	YTD	238.5			241.8			477.5			957.8		
June		22.7			19.4			40.4			82.4		
	YTD	261.2			261.2			517.8			1,040.2		
<b>Total</b>		<b>261.2</b>			<b>261.2</b>			<b>517.8</b>			<b>1,040.2</b>		

Produced by the Economics, Data and Insights team at Dairy Australia, Source: Dairy Manufacturers

Please Note: These reports contain data based on a combination of voluntary direct reporting from processors, and data sourced from government agencies. Retrospective adjustments are possible if new or revised data is received.

# Milk production report (Litres '000s)

## New South Wales

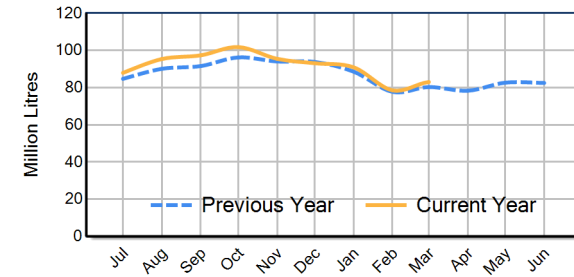


		Inland/Central	North Coast	Southern	NSW
Month	March-23	19,304	19,736	39,326	78,366
	March-24	20,872	19,571	39,828	80,271
	March-25	20,023	19,456	43,501	82,980
	<b>% change</b>	<b>-4.1%</b>	<b>-0.6%</b>	<b>9.2%</b>	<b>3.4%</b>
Region Share	March-24	26.0%	24.4%	49.6%	100.0%
	March-25	24.1%	23.4%	52.4%	100.0%
		Inland/Central	North Coast	Southern	NSW
Year To Date	2022/2023	174,663	194,195	384,767	753,625
	2023/2024	194,757	204,812	397,301	796,870
	2024/2025	195,162	198,731	429,377	823,270
	<b>% change</b>	<b>0.2%</b>	<b>-3.0%</b>	<b>8.1%</b>	<b>3.3%</b>
Region Share	2023/2024	24.4%	25.7%	49.9%	100.0%
	2024/2025	23.7%	24.1%	52.2%	100.0%
		Inland/Central	North Coast	Southern	NSW
Total	2023/2024	261,215	261,178	517,842	1,040,235
	<b>Region Share</b>	<b>25.1%</b>	<b>25.1%</b>	<b>49.8%</b>	<b>100.0%</b>

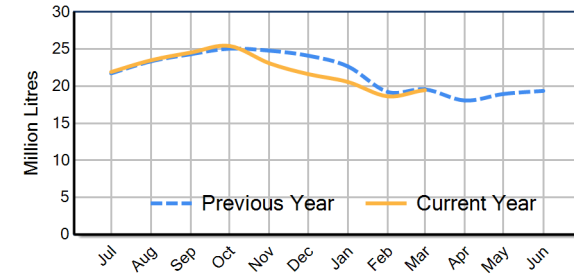
## Average Milkfat & Protein (%)

		Inland/Central	North Coast	Southern	NSW
Milkfat	March-23	4.04%	4.11%	4.21%	4.14%
	March-24	3.97%	4.07%	4.20%	4.11%
	March-25	4.06%	4.15%	4.18%	4.14%
	<b>% change 24/25</b>	<b>2.1%</b>	<b>2.0%</b>	<b>-0.4%</b>	<b>0.9%</b>
		Inland/Central	North Coast	Southern	NSW
Protein	March-23	3.33%	3.31%	3.42%	3.37%
	March-24	3.32%	3.29%	3.41%	3.35%
	March-25	3.37%	3.32%	3.41%	3.38%
	<b>% change 24/25</b>	<b>1.7%</b>	<b>1.0%</b>	<b>0.2%</b>	<b>0.8%</b>

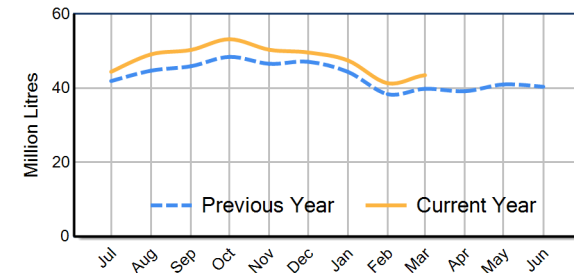
NSW Milk Production - Total Regions



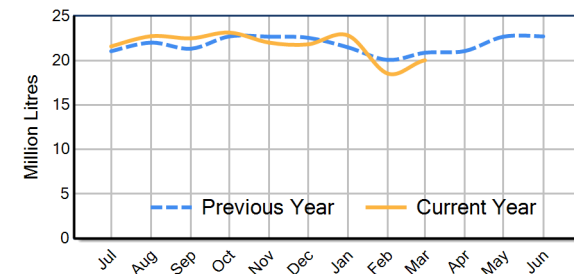
NSW Milk Production - North Coast Region



NSW Milk Production - Southern Region



NSW Milk Production - Inland/Central Region



Please note: These reports contain data based on a combination of voluntary direct reporting from processors, and data sourced from government agencies. Retrospective adjustments are possible if new or revised data is received.