

# New South Wales Milk Production

## 24/25 by Region

### (Million Litres)



		Inland/Central			North Coast			Southern			New South Wales		
		23/24	24/25	Var %	23/24	24/25	Var %	23/24	24/25	Var %	23/24	24/25	Var %
July		21.0	21.6	2.6%	21.7	21.9	0.9%	41.9	44.4	6.0%	84.7	87.9	3.8%
	YTD	21.0	21.6	2.6%	21.7	21.9	0.9%	41.9	44.4	6.0%	84.7	87.9	3.8%
August		22.0	22.7	3.3%	23.4	23.5	0.6%	44.7	49.1	9.8%	90.1	95.3	5.8%
	YTD	43.1	44.3	2.9%	45.1	45.4	0.7%	86.6	93.5	8.0%	174.8	183.3	4.9%
September		21.3	22.5	5.5%	24.3	24.5	0.9%	45.9	50.3	9.6%	91.6	97.3	6.3%
	YTD	64.4	66.8	3.8%	69.4	69.9	0.8%	132.6	143.9	8.5%	266.3	280.6	5.4%
October		22.7	23.1	1.9%	25.1	25.4	1.5%	48.4	53.2	9.8%	96.2	101.8	5.8%
	YTD	87.1	90.0	3.3%	94.4	95.4	1.0%	181.0	197.1	8.9%	362.5	382.4	5.5%
November		22.7	22.0	-2.9%	24.8	23.1	-6.9%	46.6	50.4	8.1%	94.0	95.4	1.5%
	YTD	109.8	112.0	2.0%	119.2	118.4	-0.7%	227.6	247.4	8.7%	456.6	477.8	4.7%
December		22.6	21.8	-3.3%	24.1	21.6	-10.3%	47.1	49.6	5.3%	93.8	93.1	-0.8%
	YTD	132.3	133.8	1.1%	143.3	140.1	-2.3%	274.7	297.1	8.1%	550.4	570.9	3.7%
January		21.5	22.8	6.2%	22.7	20.6	-9.3%	44.4	47.5	6.9%	88.6	90.9	2.6%
	YTD	153.8	156.6	1.8%	166.0	160.7	-3.2%	319.1	344.5	8.0%	638.9	661.8	3.6%
February		20.1	18.5	-7.7%	19.2	18.6	-3.1%	38.4	41.3	7.7%	77.7	78.5	1.1%
	YTD	173.9	175.1	0.7%	185.2	179.3	-3.2%	357.5	385.9	7.9%	716.6	740.3	3.3%
March		20.9			19.6			39.8			80.3		
	YTD	194.8			204.8			397.3			796.9		
April		21.1			18.1			39.2			78.3		
	YTD	215.8			222.9			436.5			875.2		
May		22.7			18.9			41.0			82.6		
	YTD	238.5			241.8			477.5			957.8		
June		22.7			19.4			40.4			82.4		
	YTD	261.2			261.2			517.8			1,040.2		
<b>Total</b>		<b>261.2</b>			<b>261.2</b>			<b>517.8</b>			<b>1,040.2</b>		

Produced by the Economics, Data and Insights team at Dairy Australia, Source: Dairy Manufacturers

Please Note: These reports contain data based on a combination of voluntary direct reporting from processors, and data sourced from government agencies. Retrospective adjustments are possible if new or revised data is received.

# Milk production report (Litres '000s)

## New South Wales

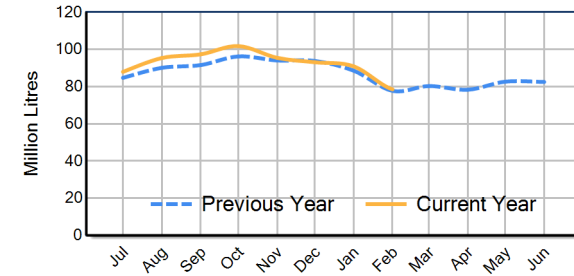


		Inland/Central	North Coast	Southern	NSW
Month	February-23	17,762	18,755	36,374	72,891
	February-24	20,068	19,221	38,381	77,669
	February-25	18,530	18,625	41,336	78,491
	<b>% change</b>	<b>-7.7%</b>	<b>-3.1%</b>	<b>7.7%</b>	<b>1.1%</b>
Region Share	February-24	25.8%	24.7%	49.4%	100.0%
	February-25	23.6%	23.7%	52.7%	100.0%
		Inland/Central	North Coast	Southern	NSW
Year To Date	2022/2023	155,358	174,460	345,441	675,259
	2023/2024	173,885	185,241	357,473	716,599
	2024/2025	175,138	179,275	385,876	740,290
	<b>% change</b>	<b>0.7%</b>	<b>-3.2%</b>	<b>7.9%</b>	<b>3.3%</b>
Region Share	2023/2024	24.3%	25.8%	49.9%	100.0%
	2024/2025	23.7%	24.2%	52.1%	100.0%
		Inland/Central	North Coast	Southern	NSW
Total	2023/2024	261,215	261,178	517,842	1,040,235
	<b>Region Share</b>	<b>25.1%</b>	<b>25.1%</b>	<b>49.8%</b>	<b>100.0%</b>

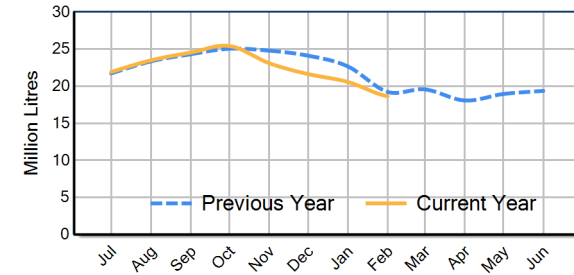
## Average Milkfat & Protein (%)

		Inland/Central	North Coast	Southern	NSW
Milkfat	February-23	4.01%	4.04%	4.12%	4.07%
	February-24	3.89%	4.00%	4.09%	4.02%
	February-25	4.05%	4.06%	4.12%	4.09%
	<b>% change 24/25</b>	<b>4.2%</b>	<b>1.4%</b>	<b>0.8%</b>	<b>1.8%</b>
		Inland/Central	North Coast	Southern	NSW
Protein	February-23	3.25%	3.27%	3.36%	3.31%
	February-24	3.27%	3.23%	3.34%	3.29%
	February-25	3.34%	3.31%	3.38%	3.35%
	<b>% change 24/25</b>	<b>2.3%</b>	<b>2.5%</b>	<b>1.2%</b>	<b>1.8%</b>

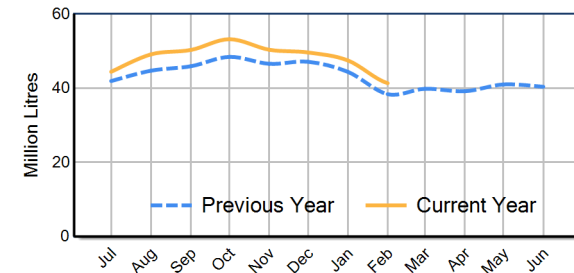
NSW Milk Production - Total Regions



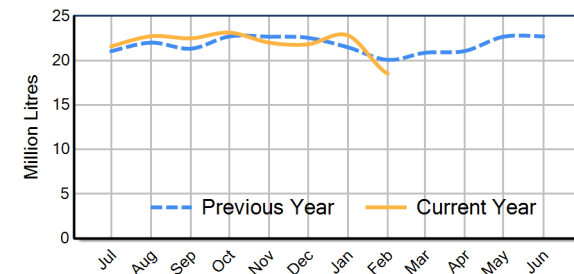
NSW Milk Production - North Coast Region



NSW Milk Production - Southern Region



NSW Milk Production - Inland/Central Region



Please note: These reports contain data based on a combination of voluntary direct reporting from processors, and data sourced from government agencies. Retrospective adjustments are possible if new or revised data is received.