



# Weekly pasture growth and evapotranspiration

utas.edu.au/tia

Author: Leah Davies & Jacob Lightman

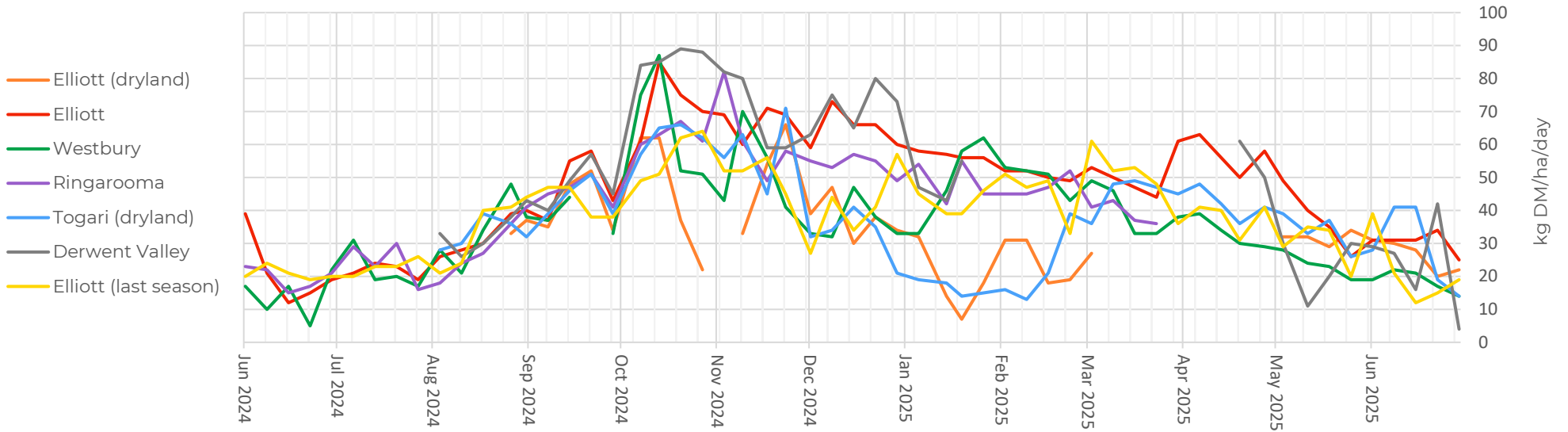
## Regional pasture growth rates

Region	Pasture growth rate (kg DM/ha/day) - Satellite	
	Irrigated	Dryland
Togari	14	
Elliott	22	25
Westbury	14	
Ringarooma		
Derwent Valley	4	

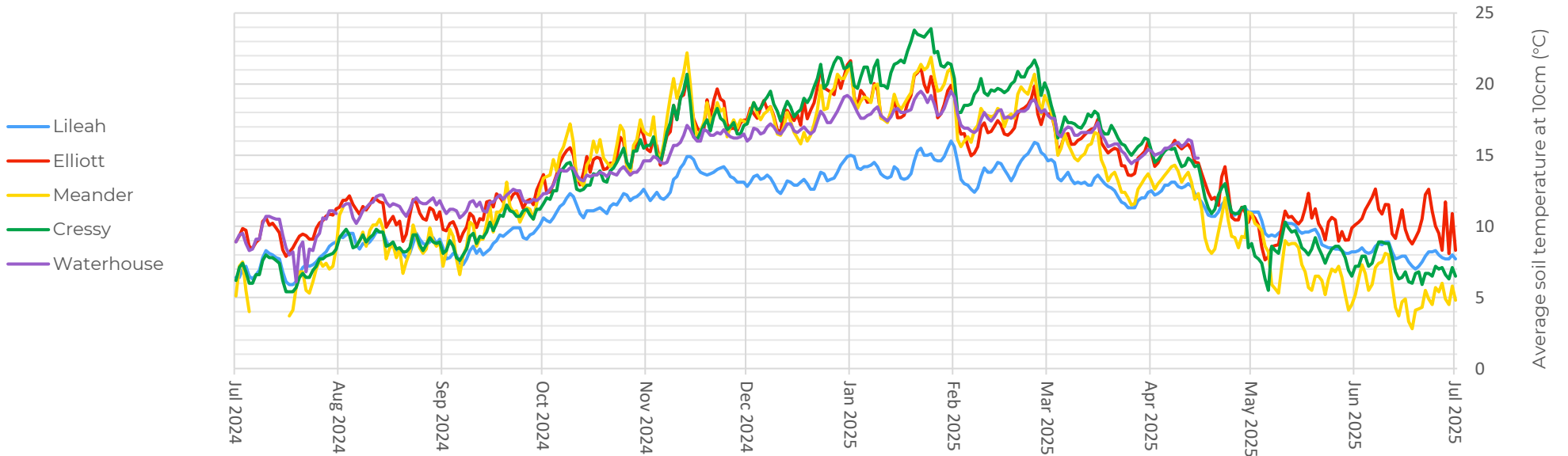
Pasture growth rates vary between farms for many reasons, including climate, soil type, nutrient availability and management. Satellite pasture growth rates are sourced from Pasture.io (<https://pasture.io/>).

Leaf emergence rate at Elliott				
Leaf emergence rate (days per leaf)	Days to 2 leaf stage	Days to 2.5 leaf stage	Days to 3 leaf stage	
Irrigated	14	28	35	42

### Irrigated pasture growth rates — satellite



### Soil temperature



# Weekly evapotranspiration and rainfall

Wednesday, 9 July to Tuesday, 15 July 2025

Location	ET <sub>o</sub> <sup>1</sup> (mm)	Rainfall (mm)	Rainfall (month-to-date; mm)	Soil temp (°C) 9:00 a.m. @ 10 cm
Pegarah (KI)	9.6	36.6	54.2	7.4
Lileah	4.1	76.4	77.2	7.9
Elliott	4.2	49.4	49.6	9.5
Meander	4.7			5.3
Cressy	5.1	40.2	41.4	6.8
Ringarooma	7.9	19.8	34.2	6.7
Waterhouse				

Data for this table is collected from the [UNITAS Weathermation weather stations](#) at Lileah, Elliott (Tasmanian Dairy Research Facility), Meander (Clear Springs) and Waterhouse (Forester Lodge). These weather stations have been installed on [Smarter Irrigation for Profit II](#) optimised irrigation farms. Data for Pegarah (King Island) and Ringarooma is sourced from the Ag Logic Weather Station and Probe Network (<https://www.aglogic.com.au/>).

<sup>1</sup>ET<sub>o</sub> is the reference evapotranspiration, an estimation of the evapotranspiration from the “reference surface” — grass with an assumed height of 12 cm.

Note: The weather station in Meander was damaged recently and the rainfall data is currently unreliable, so we've chosen to omit it until it can be repaired. We've also identified an issue with the air temperature thermometer at Lileah, which is resulting in the underreporting of the ET<sub>o</sub>. As such, we're estimating this value until we can address the issue.

Tuesday, 8 July to Monday, 14 July 2025

Location	ET <sub>o</sub> <sup>1</sup> (mm)	Rainfall (mm)	Rainfall (month-to-date; mm)	Soil temp (°C) 9:00 a.m. @ 10 cm
Ouse	7.1	9.8	10.2	

Climate data for Ouse is collated from [www.bom.gov.au](http://www.bom.gov.au). It is displayed in a different table because the date that data is available is different to the UNITAS Weathermation stations.

\* Soil temperature information for Ouse is currently unavailable.

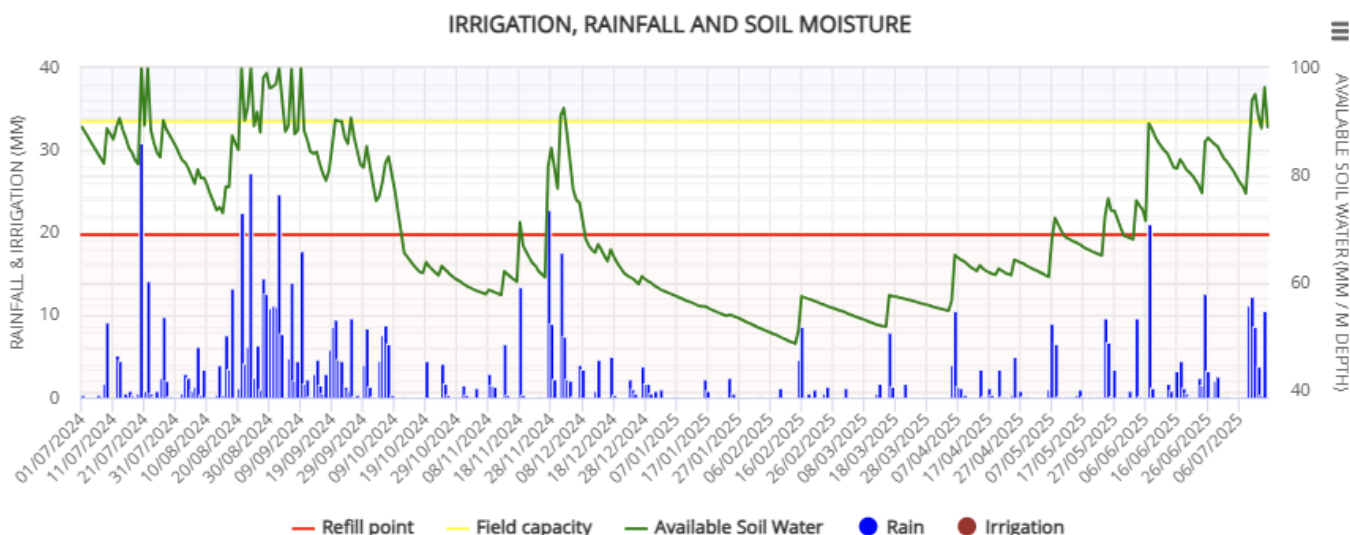
# Soil moisture budgets

The soil moisture budgets below have been produced using IrriPasture (<https://irripasture.com/>). This is a free budgeting tool that can help you make decisions about your irrigation scheduling. This report has budgets for Bushy Park/Ouse, Scottsdale, Meander, Sheffield, Elliott and Lileah. The graphs show the available soil moisture (green line). The aim is to keep this green line between the red line (refill point) and the yellow line (field capacity). The distance between the yellow and red line is how much Readily Available Water (RAW) the soil holds. The amount of RAW your soil can hold will depend on your soil type. As a guide, the amount of RAW that is held in the top 30 cm for common soil types is:

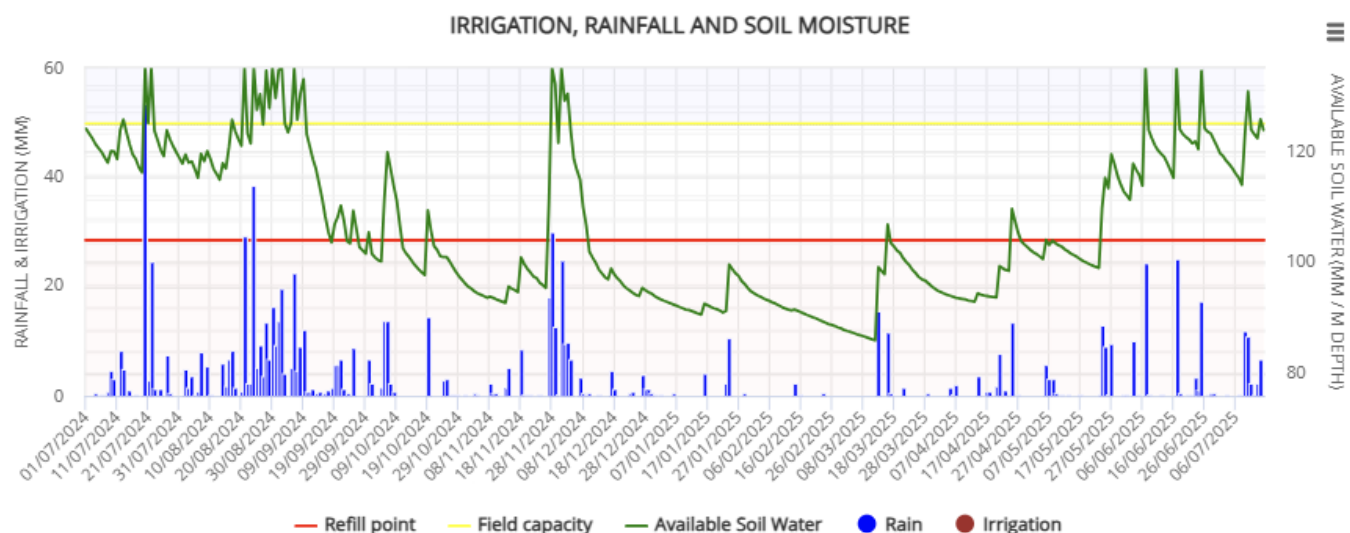
- Sand = 9 mm
- Loamy sand = 15 mm
- Sandy loam = 21 mm
- Loam = 27 mm
- Clay = 15 mm
- Clay loam = 24 mm

The soil moisture budgets in this report have used an 'average' RAW value of 21 mm. If your soil holds less soil moisture than this, you will need to irrigate earlier than the water budget indicates. If your soil holds more moisture than this, you probably don't need to irrigate as soon. **THESE SOIL MOISTURE BUDGETS ARE A GUIDE ONLY.** Please do a physical check of the soil moisture on your farm to help make the decision when to start irrigating.

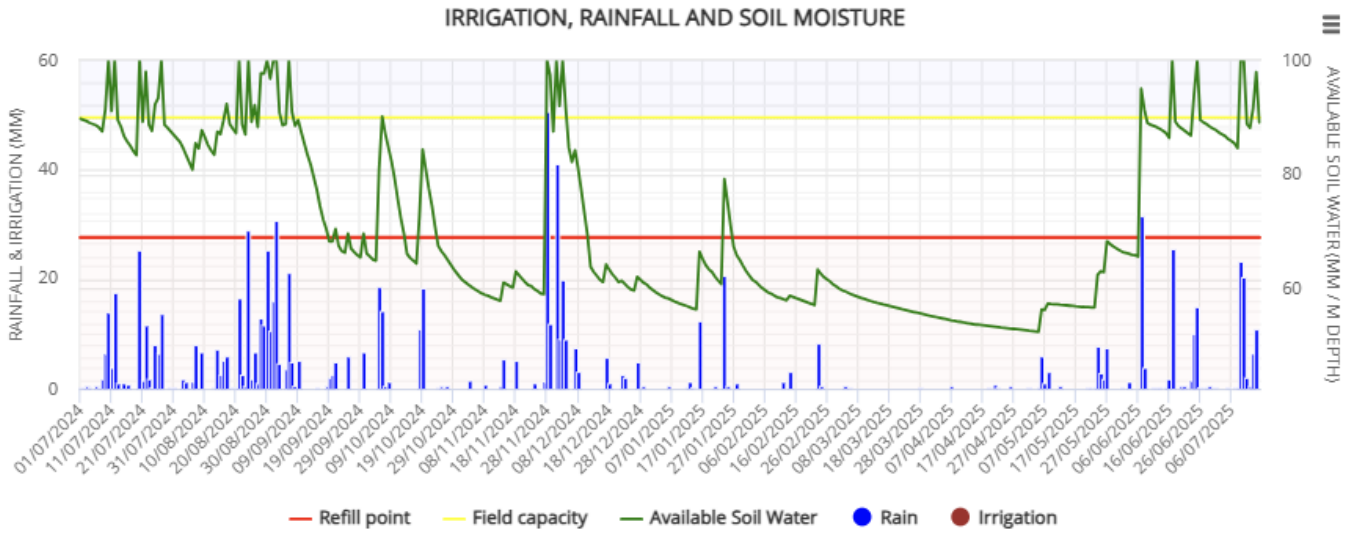
## Smithton



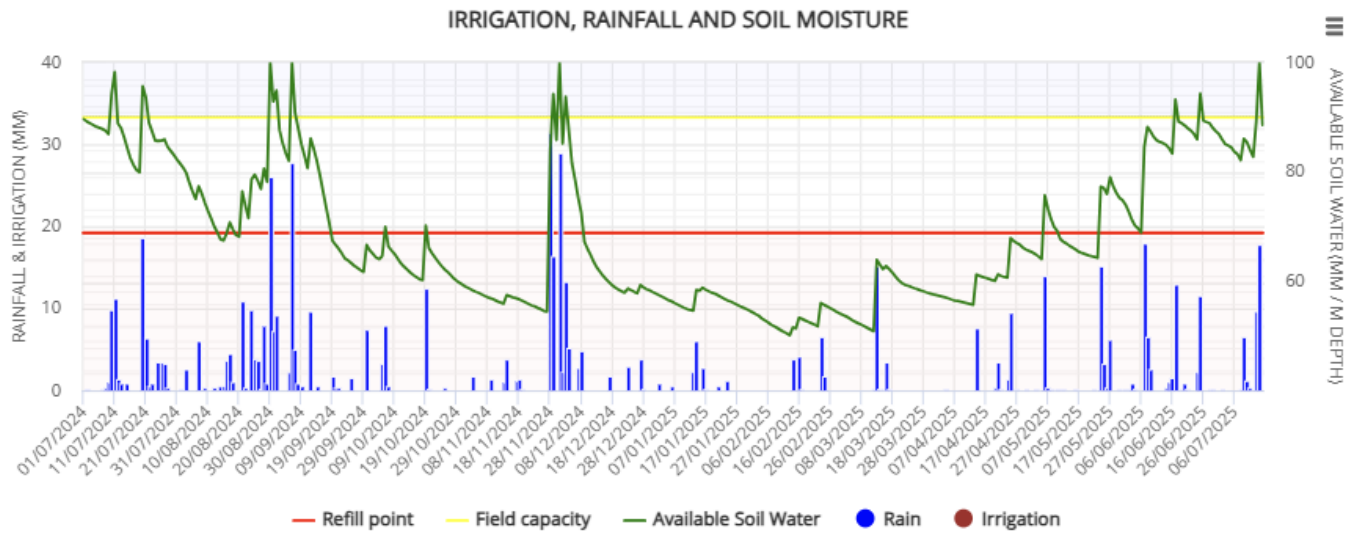
## Wynyard



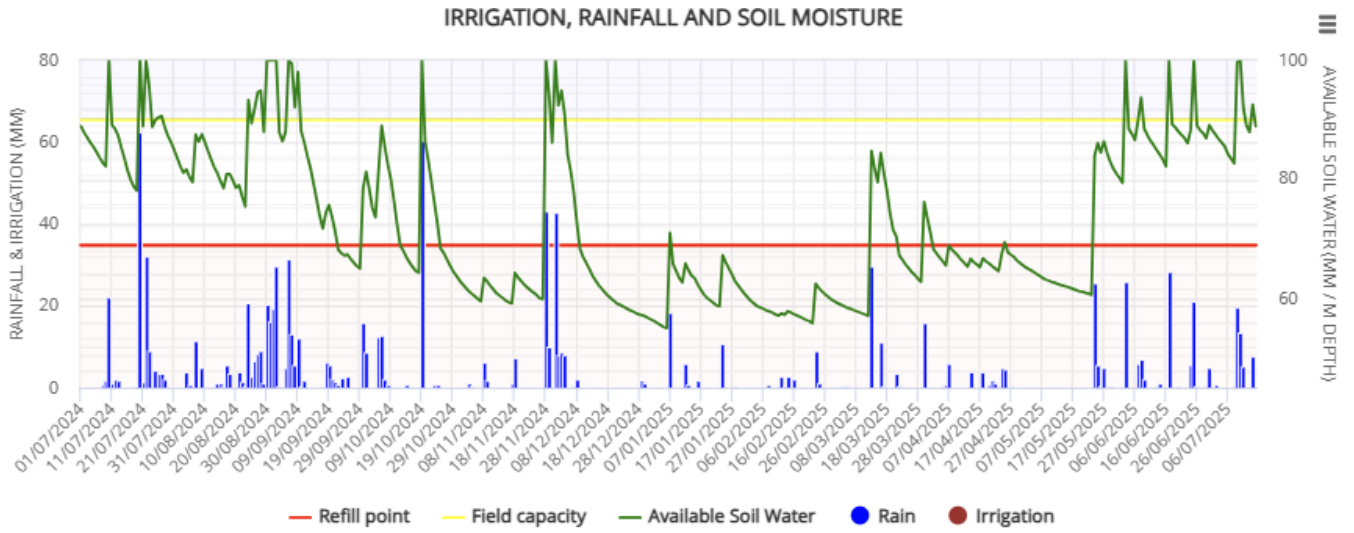
## Sheffield



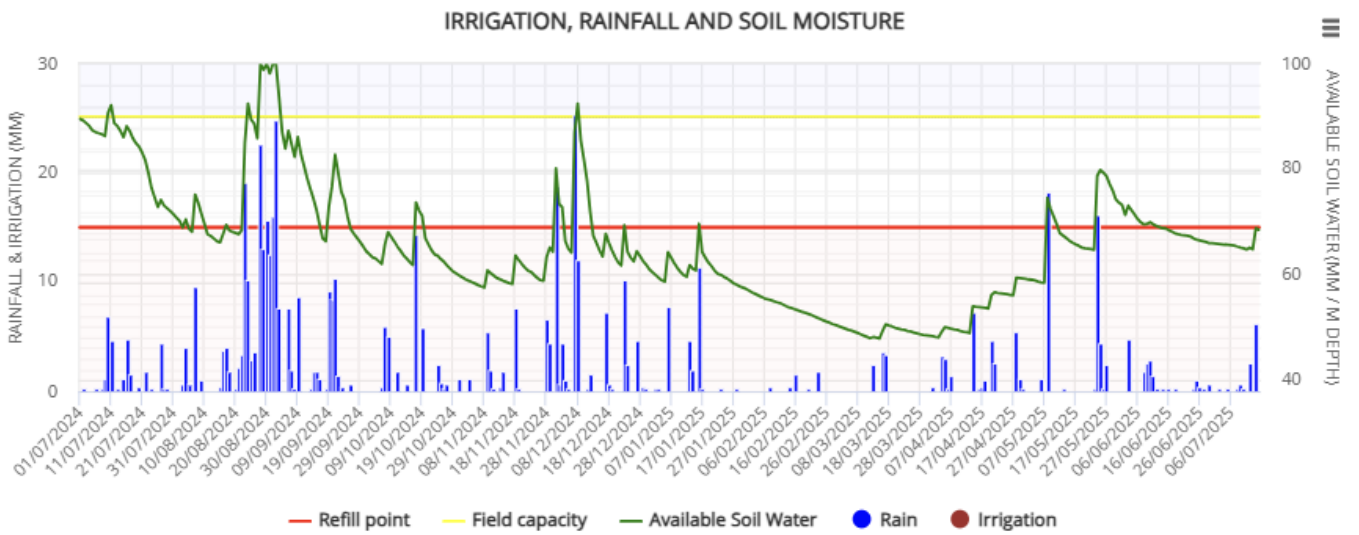
## Cressy



## Scottsdale



## Ouse



## 7-day forecasts

The following tables present the 7-day evapotranspiration, rainfall, temperature, humidity, and forecast for key dairy regions in Tasmania. The data is sourced from the Weatherwise Watering Swan Systems (<https://www.swansystems.com.au/irrigation-harnessing-power-of-data/>)

### Elliott

Date	ETo* mm	Chance of Rain %	Rain Range mm	Rain Estimate mm	Temp Range °C	Avg R. Humidity %	Avg Wind Speed km/hr
Wed, 16-Jul	1.2	90	4-8	6.1	2-12	83	16
Thu, 17-Jul	1	100	10-15	12.2	3-12	82	19
Fri, 18-Jul	1	70	1-3	2.7	2-13	90	13
Sat, 19-Jul	1.2	95	9-15	11.2	5-12	88	25
Sun, 20-Jul	1.1	75	2-5	3.8	3-12	87	15
Mon, 21-Jul	1	65	1-3	2.5	1-13	92	15
Tue, 22-Jul	1	90	9-20	12.9	5-13	90	21
<b>TOTAL</b>	<b>7.5</b>			<b>51.4</b>			

### Smithton

Date	ETo* mm	Chance of Rain %	Rain Range mm	Rain Estimate mm	Temp Range °C	Avg R. Humidity %	Avg Wind Speed km/hr
Wed, 16-Jul	1.3	90	4-7	5.9	3-14	85	19
Thu, 17-Jul	1.2	100	8-15	10.2	4-13	88	22
Fri, 18-Jul	1.3	70	1-3	2.7	4-15	90	18
Sat, 19-Jul	1.6	95	7-15	10.1	6-14	83	30
Sun, 20-Jul	1.3	80	3-6	5.1	4-14	88	19
Mon, 21-Jul	1.3	60	0-2	1.9	2-14	92	21
Tue, 22-Jul	1.4	85	8-15	11.6	6-15	88	27
<b>TOTAL</b>	<b>9.4</b>			<b>47.5</b>			

## Meander

Date	ETo* mm	Chance of Rain %	Rain Range mm	Rain Estimate mm	Temp Range °C	Avg R. Humidity %	Avg Wind Speed km/hr
Wed, 16-Jul	1	95	4-7	5.4	1-11	83	11
Thu, 17-Jul	0.9	100	10-20	13.7	2-11	85	13
Fri, 18-Jul	0.9	80	2-4	3.4	0-12	86	11
Sat, 19-Jul	0.9	95	15-20	17.4	5-10	85	18
Sun, 20-Jul	1	75	2-6	4.5	2-11	85	13
Mon, 21-Jul	0.9	70	1-4	3.3	-1-12	88	11
Tue, 22-Jul	1	90	10-20	15.4	3-12	85	14
<b>TOTAL</b>	<b>6.6</b>			<b>63.1</b>			

## Sheffield

Date	ETo* mm	Chance of Rain %	Rain Range mm	Rain Estimate mm	Temp Range °C	Avg R. Humidity %	Avg Wind Speed km/hr
Wed, 16-Jul	1.1	90	4-6	5	3-11	81	12
Thu, 17-Jul	0.8	100	10-15	12	4-11	83	14
Fri, 18-Jul	0.9	75	1-3	2.3	2-12	87	11
Sat, 19-Jul	0.9	95	10-15	12.9	7-10	85	19
Sun, 20-Jul	0.9	75	2-5	3.7	4-11	85	13
Mon, 21-Jul	0.9	70	1-4	3	0-12	90	11
Tue, 22-Jul	0.9	90	10-20	14.5	4-12	90	14
<b>TOTAL</b>	<b>6.4</b>			<b>53.4</b>			



## Scottsdale

Date	ETo* mm	Chance of Rain %	Rain Range mm	Rain Estimate mm	Temp Range °C	Avg R. Humidity %	Avg Wind Speed km/hr
Wed, 16-Jul	0.9	90	3-6	4.7	4-12	84	11
Thu, 17-Jul	0.8	100	15-20	15.7	4-12	84	15
Fri, 18-Jul	0.9	75	1-4	3.3	2-12	86	11
Sat, 19-Jul	1.1	95	10-20	14.6	7-11	85	19
Sun, 20-Jul	0.9	80	3-7	5.2	5-12	85	14
Mon, 21-Jul	0.9	60	1-3	2.3	1-13	90	10
Tue, 22-Jul	1	85	8-15	11.4	4-14	88	13
<b>TOTAL</b>	<b>6.5</b>			<b>57.2</b>			

## Ouse

Date	ETo* mm	Chance of Rain %	Rain Range mm	Rain Estimate mm	Temp Range °C	Avg R. Humidity %	Avg Wind Speed km/hr
Wed, 16-Jul	1	90	3-5	4	1-10	84	14
Thu, 17-Jul	1	95	7-10	9.1	0-11	85	15
Fri, 18-Jul	1.1	40	0-1	1	2-12	83	14
Sat, 19-Jul	1.6	85	5-10	7	4-12	74	18
Sun, 20-Jul	1.2	75	2-6	4.3	2-11	81	15
Mon, 21-Jul	1	25	<1	0	-3-13	88	10
Tue, 22-Jul	1	70	2-6	4.4	-2-14	84	10
<b>TOTAL</b>	<b>7.9</b>			<b>29.8</b>			

## King Island

Date	ETo* mm	Chance of Rain %	Rain Range mm	Rain Estimate mm	Temp Range °C	Avg R. Humidity %	Avg Wind Speed km/hr
Wed, 16-Jul	1.5	95	5-9	7.6	6-14	79	19
Thu, 17-Jul	1.4	95	7-15	9.7	6-13	82	21
Fri, 18-Jul	1.5	65	1-2	2	7-14	79	18
Sat, 19-Jul	1.9	90	6-10	9.2	7-14	76	31
Sun, 20-Jul	1.5	80	2-7	5.6	6-13	81	20
Mon, 21-Jul	1.2	40	0-1	1	5-14	86	18
Tue, 22-Jul	1.5	85	5-10	7.8	7-15	82	25
<b>TOTAL</b>	<b>10.5</b>			<b>42.9</b>			

